

NORFOLK, VIRGINIA

AL-291 (FAA)

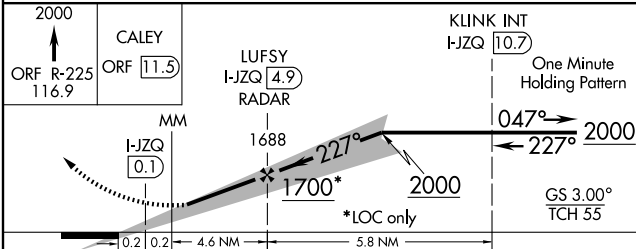
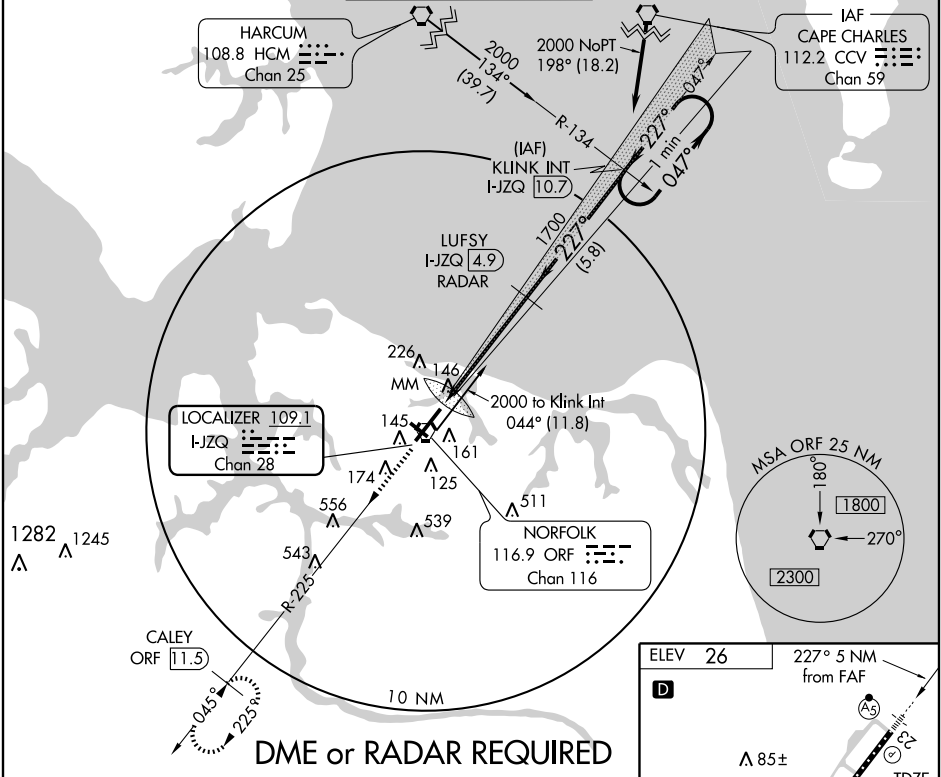
LOC/DME I-JZQ <b>109.1</b> Chan 28	APP CRS <b>227°</b>	Rwy ldg TDZE Apt Elev <b>9001</b> <b>26</b> <b>26</b>
--	------------------------	--

# ILS RWY 23

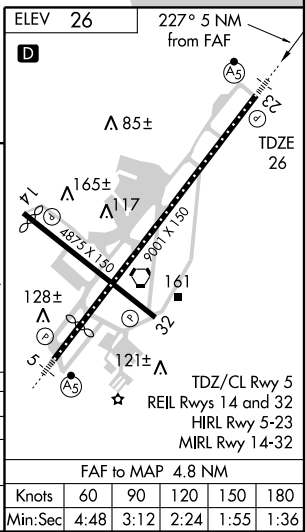
NORFOLK INTL (ORF)

S-LOC Cats A, B, C, increase visibilities ¼ mile for inoperative MALSR.	MALSR	<b>MISSED APPROACH:</b> Climb to 2000 via ORF VORTAC R-225 to CALEY Int and hold.
---	-------	---

ATIS <b>127.15</b>	NORFOLK APP CON <b>118.9 353.7</b>	NORFOLK TOWER <b>120.8 257.8</b>	GND CON <b>121.9</b>	CLNC DEL <b>118.5</b>
-----------------------	---------------------------------------	-------------------------------------	-------------------------	--------------------------



CATEGORY	A	B	C	D
S-ILS 23		321-¾ 295 (300-¾)		
S-LOC 23		400-¾ 374 (400-¾)		400-1 374 (400-1)
CIRCLING	520-1 494 (500-1)		540-1½ 514 (600-1½)	580-2 554 (600-2)



NORFOLK, VIRGINIA  
Amdt 6E 09015

36°54'N - 76°12'W

# NORFOLK INTL (ORF)

## ILS RWY 23

NE-3, 22 OCT 2009 to 19 NOV 2009

NE-3, 22 OCT 2009 to 19 NOV 2009