

TACAN NGU Chan 86Y	APCH CRS 290°	Rwy 28 ldg 7376 TDZE 15 Arpt Elev 17
-----------------------	------------------	--

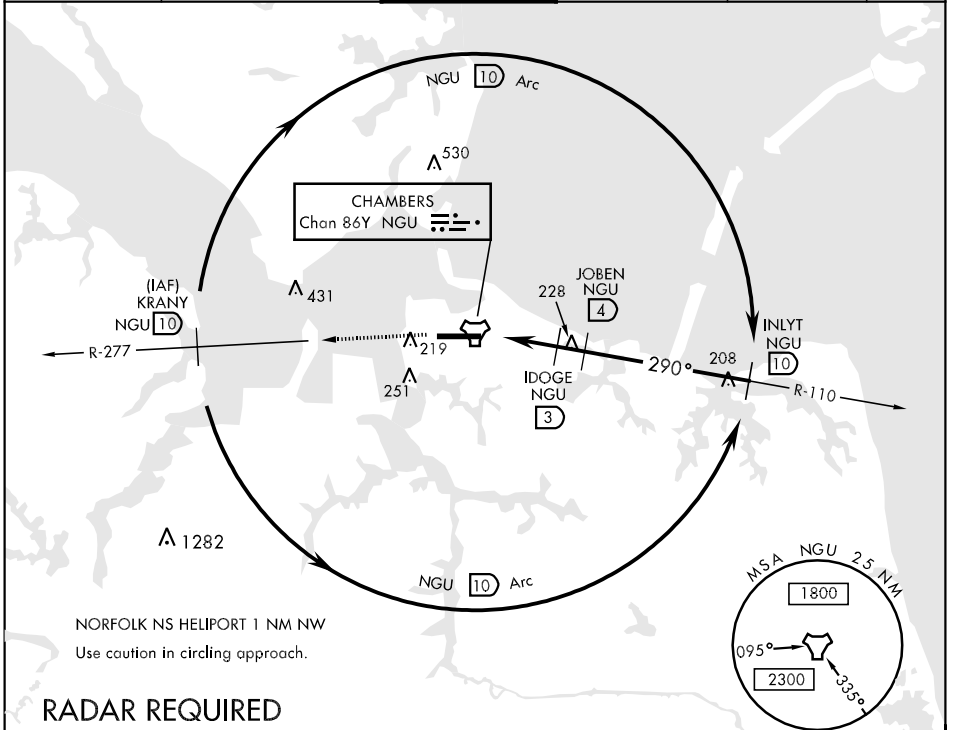
AL-290 [USN]

NORFOLK NS (CHAMBERS FIELD) (KNGU)

▼ * When ALS inop, increase vis CAT AB to 1 mile, CAT C to 1½ miles, CAT D to 1½ miles.
 ** When ALS inop, increase vis CAT ABCD to 1 mile.

SSALS (A4) MISSED APPROACH: Climb to 2300 via NGU TACAN R-277 then as directed by ATC.

ATIS 118.425 342.0	NORFOLK APP CON 118.9 353.7	CHAMBERS TOWER 124.3 379.15	GND CON 121.8 370.85	CLNC DEL 120.7 348.0	ASR/PAR
-----------------------	--------------------------------	--------------------------------	-------------------------	-------------------------	---------

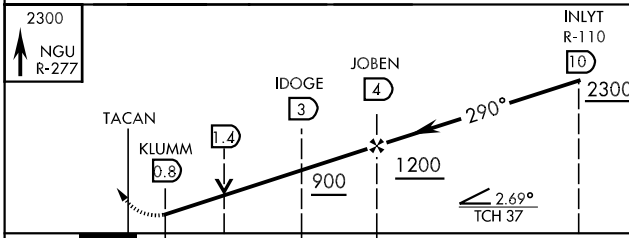


NE-3, 22 OCT 2009 to 19 NOV 2009

NE-3, 22 OCT 2009 to 19 NOV 2009

RADAR REQUIRED

EMERG SAFE ALT 100 NM 2600



CATEGORY	A	B	C	D
S-28 *	460-¾ 445 (500-¾)	460-1 445 (500-1)	460-1¼ 445 (500-1¼)	460-1½ 445 (500-1½)
CIRCLING	520-1 503 (600-1)	520-1½ 503 (600-1½)	580-2 563 (600-2)	
S-PAR 28**	265-¾	250	(300-¾)	GS 3.00°

