

LOC I-NGU 108.95	APCH CRS 100°	Rwy ldg TDZE Arpt Elev 8067 17 17
----------------------------	-------------------------	--

AL-290 [UN]

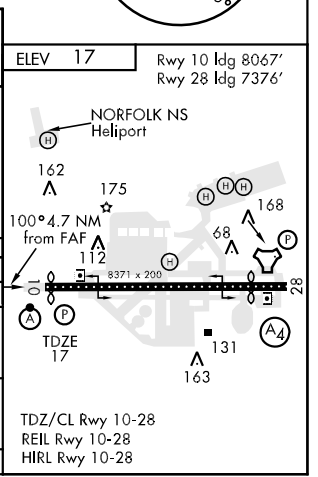
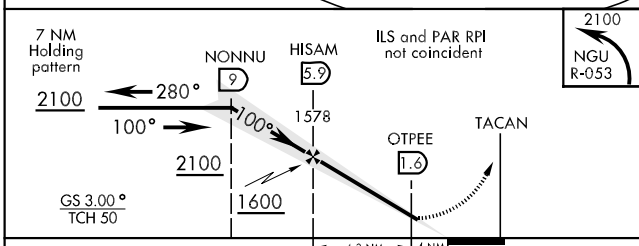
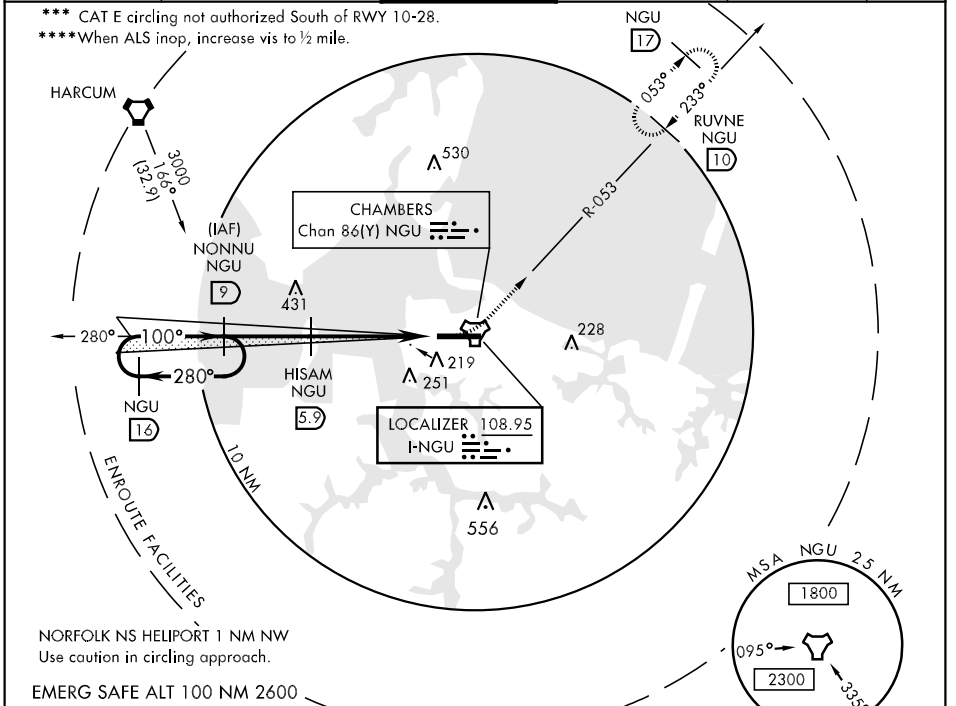
NORFOLK NS (CHAMBERS FIELD) (KNGU)

▼ * When ALS inop, increase vis to ¼ mile.
 ** When ALS inop, increase vis CAT AB to 1 mile,
 CAT C to ½ miles, CAT DE to ½ miles.



MISSED APPROACH: Climbing left
 turn to 2100 via NGU TACAN R-053
 to RUVNE and hold.

ATIS 118.425 342.0	NORFOLK APP CON 118.9 353.7	CHAMBERS TOWER 124.3 379.15	GND CON 121.8 370.85	CLNC DEL 120.7 348.0	ASR/PAR
------------------------------	---------------------------------------	---------------------------------------	--------------------------------	--------------------------------	---------



CATEGORY	A	B	C	D	E
S-ILS 10 *	217-½		200 (200-½)		
S-LOC 10 **	460-½	443 (500-½)	460-¾ 443 (500-¾)	460-1	443 (500-1)
CIRCLING ***	520-1	503 (600-1)	520-1½ 503 (600-1½)	580-2	563 (600-2)
S-PAR 10 ****	117-¼		100	(100-¼)	GS 3.00°

NE-3, 22 OCT 2009 to 19 NOV 2009

NE-3, 22 OCT 2009 to 19 NOV 2009