

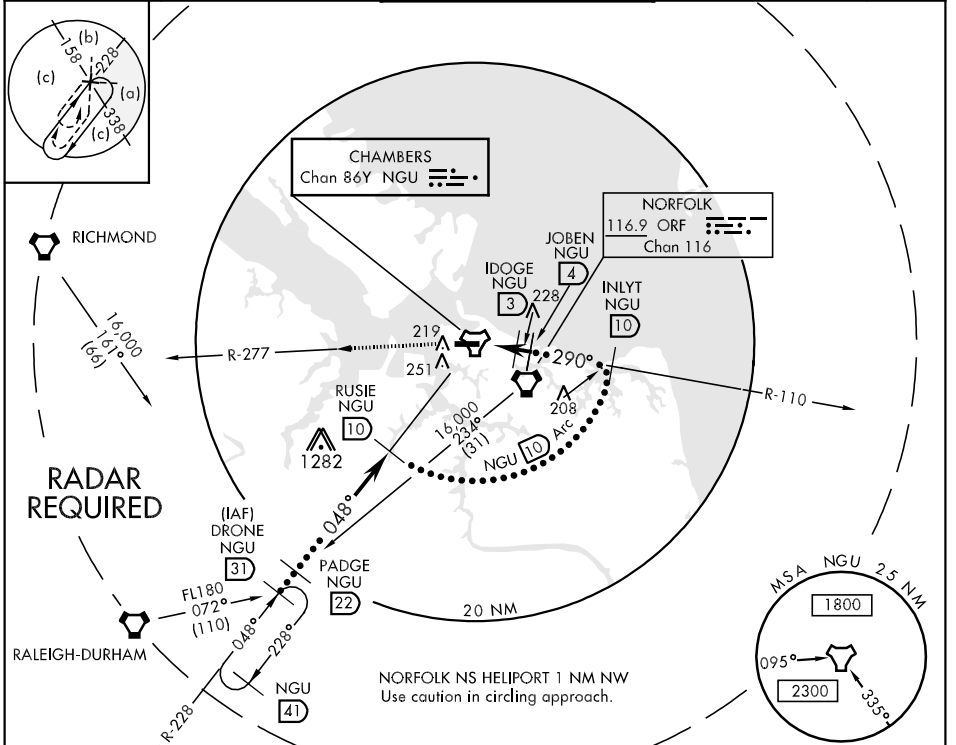
TACAN NGU Chan 86Y	APCH CRS 290°	Rwy ldg 7376 TDZE 15 Arpt Elev 17	JAL-290 [USN]	NORFOLK NS (CHAMBERS FIELD) (KNGU)
-----------------------	------------------	--	---------------	------------------------------------

▼ * When ALS inop, increase CAT C vis to 1¼ miles, CAT DE to 1½ miles.
 ** CAT E circling not authorized S of Rwy 10-28.
 *** When ALS inop, increase CAT CDE vis to 1 mile.

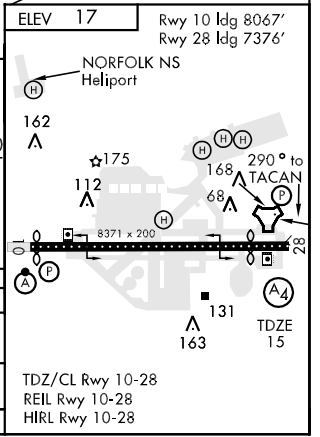
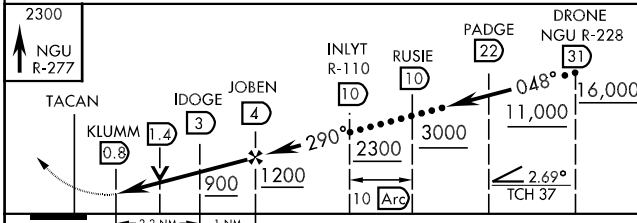


MISSED APPROACH: Climb to 2300 via NGU R-277 then as directed by ATC.

ATIS 118.425 342.0	NORFOLK APP CON 118.9 353.7	CHAMBERS TOWER 124.3 379.15	GND CON 121.8 370.85	ASR/PAR
-----------------------	--------------------------------	--------------------------------	-------------------------	---------



EMERG SAFE ALT 100 NM 2600



CATEGORY	C	D	E
S-28 *	460-1 445 (500-1)	460-1¼	445 (500-1¼)
CIRCLING **	520-1½ 503 (600-1½)	580-2	563 (600-2)
S-PAR 28 ***	265-¾	250	(300-¾) GS 3.00°

NE-3, 22 OCT 2009 to 19 NOV 2009

NE-3, 22 OCT 2009 to 19 NOV 2009