

LOC/DME I-NEW 111.3 Chan 50	APP CRS 177°	Rwy Idg 6639 TDZE 8 Apt Elev 8
---	------------------------	---

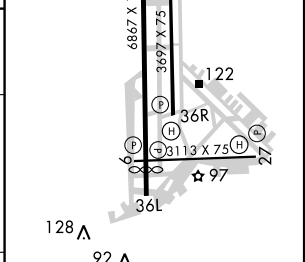
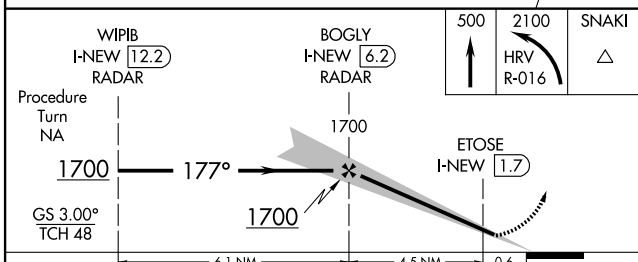
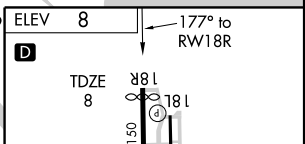
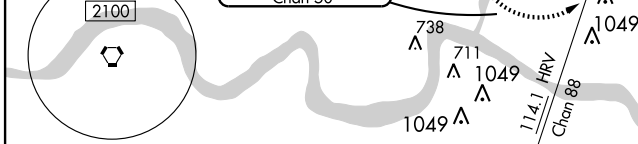
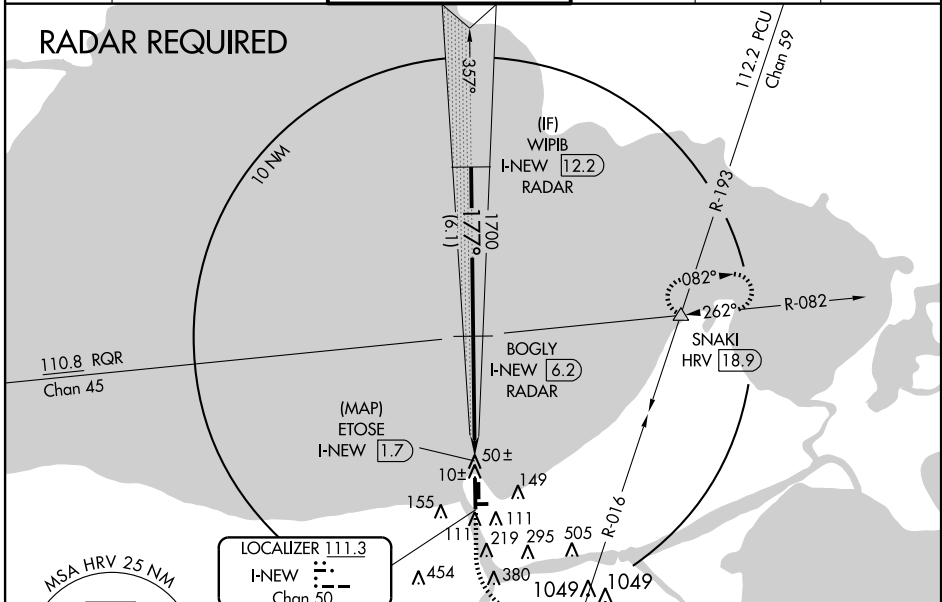
ILS or LOC RWY 18R

NEW ORLEANS/ LAKEFRONT (NEW)

▼ When local altimeter setting not received, use Louis Armstrong New Orleans Intl altimeter setting and increase DA 29 feet and all MDAs 40 feet, increase S-ILS 18R visibility all Cats ¼ mile, and circling Cat D visibility ¼ mile. Visibility reduction by helicopters NA. DME or RADAR required.

MISSED APPROACH: Climb to 500 then climbing left turn to 2100 via HRV VORTAC R-016 to SNAKI INT and hold.

ATIS 124.9	NEW ORLEANS APP CON NORTH 133.15 290.3 SOUTH 123.85 256.9	LAKEFRONT TOWER ★ 119.9 (CTAF)	GND CON 121.7	CLNC DEL 127.4	UNICOM 122.95
----------------------	---	--	-------------------------	--------------------------	-------------------------



CATEGORY	A	B	C	D
S-ILS 18R		258-3/4	250 (300-3/4)	
S-LOC 18R		300-1	292 (300-1)	
CIRCLING	520-1	512 (600-1)	520-1 1/2 512 (600-1 1/2)	660-2 652 (700-2)

Knots	60	90	120	150	180
Min:Sec	4:30	3:00	2:15	1:48	1:30

SC-4, 22 OCT 2009 to 19 NOV 2009

SC-4, 22 OCT 2009 to 19 NOV 2009