

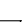


RNAV (GPS) RWY 6

POUGHKEEPSIE / DUTCHESS COUNTY (POU)

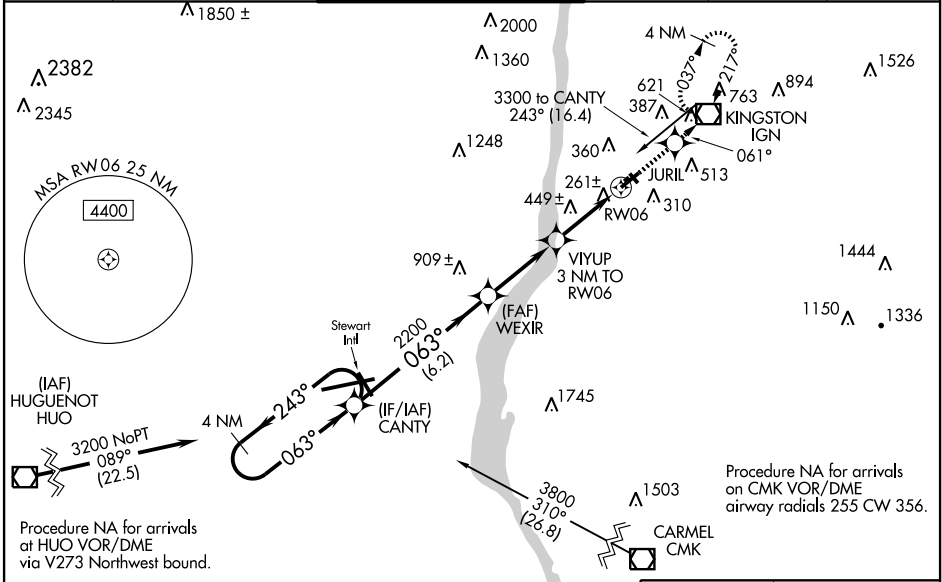
WAAS CH 42910 W06A	APP CRS 063°	Rwy Idg TDZE Apt Elev	5001 156 165
--	------------------------	-----------------------------	---

⚠ Inoperative table does not apply to LNAV Cats A and B. Baro-VNAV NA when using Montgomery altimeter setting. For uncompensated Baro-VNAV systems, LNAV/VNAV NA below -15°C (5°F) or above 49°C (120°F). DME/DME RNP-0.3 NA. Visibility reduction by helicopters NA. When local altimeter setting not received, use Montgomery altimeter setting and increase all DA 71 feet and MDA 80 feet, and increase LNAV/VNAV all Cat, LNAV Cats C, D and Circling Cat B, C, D visibility ¼ mile. For inoperative MALS, when using Montgomery altimeter setting, increase LPV all Cats visibility to 1 ½ mile.

MALS   

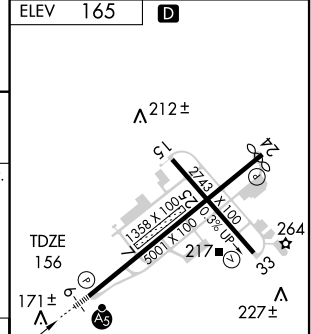
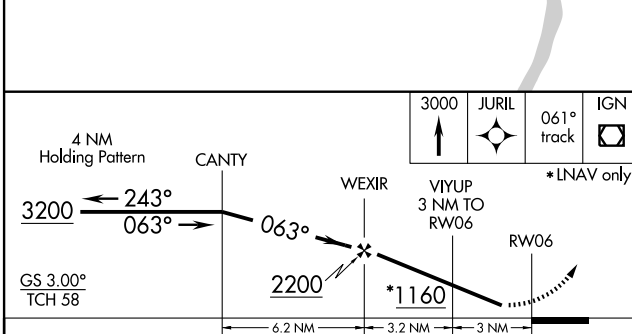
MISSED APPROACH: Climb to 3000 direct JURIL and via 061° track to IGN VOR/DME and hold, continue climb-in-hold to 3000.

ATIS 126.75	NEW YORK APP CON 132.75 363.1	DUTCHESS COUNTY TOWER * 124.0 (CTAF) 269.15	GND CON 121.8	CLNC DEL 121.8	UNICOM 122.95
-----------------------	---	---	-------------------------	--------------------------	-------------------------




NE-2, 22 OCT 2009 to 19 NOV 2009

NE-2, 22 OCT 2009 to 19 NOV 2009



CATEGORY	A	B	C	D
LPV DA		503-1	347 (400-1)	
LNAV/VNAV DA		738-1 ½	582 (600-1 ½)	
LNAV MDA		740-1 584 (600-1)	740-1 ¼ 584 (600-1 ¼)	
CIRCLING	760-1 595 (600-1)	840-1 675 (700-1)	840-2 675 (700-1)	840-2 ¼ 675 (700-2 ¼)

MIRL Rwy 15-33
HIRL Rwy 6-24 
REIL Rwy 24 and 33 