

GRAHAM FIVE ARRIVAL (GHM.GHM5)

NASHVILLE, TENNESSEE

NASHVILLE APP CON
 120.6 387.0
 NASHVILLE ATIS
 135.1

GHM VORTAC TURBOJET VERTICAL NAVIGATION PLANNING INFORMATION

Expect clearance to cross at 11000.
 Expect clearance to cross at 250 KIAS
 when landing BNA Rwy's 2L, 2C, 2R or 13.

NASHVILLE
 114.1 BNA
 Chan 88
 N36°08.22' - W86°41.09'

JOHN C. TUNE

NASHVILLE INTL

SMYRNA

MURFREESBORO MUNI

LINGA
 N36°05.17'
 W86°48.87'

GRAHAM
 111.6 GHM
 Chan 53
 N35°50.04' - W87°27.11'

DYERSBURG
 116.8 DYR
 Chan 115

HELAM
 N35°27.44'
 W88°38.58'

MEMPHIS
 117.5 MEM
 Chan 122
 N35°00.91' - W89°58.99'
 L-18, H-6

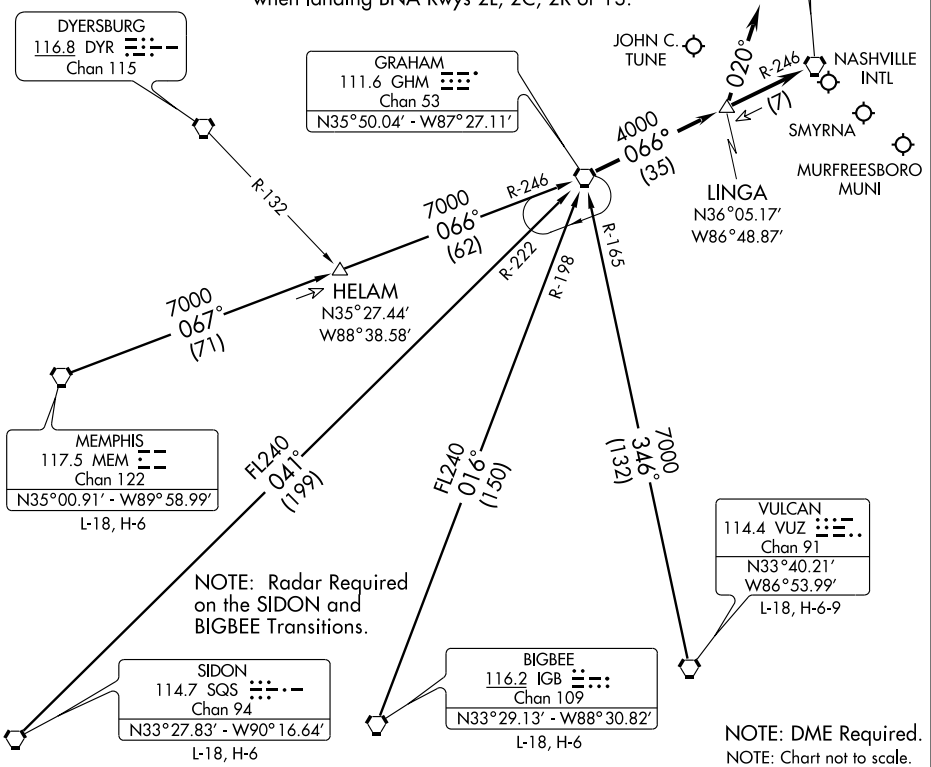
NOTE: Radar Required
 on the SIDON and
 BIGBEE Transitions.

SIDON
 114.7 SQS
 Chan 94
 N33°27.83' - W90°16.64'
 L-18, H-6

BIGBEE
 116.2 IGB
 Chan 109
 N33°29.13' - W88°30.82'
 L-18, H-6

VULCAN
 114.4 VUZ
 Chan 91
 N33°40.21'
 W86°53.99'
 L-18, H-6-9

NOTE: DME Required.
 NOTE: Chart not to scale.



SE-1, 22 OCT 2009 to 19 NOV 2009

SE-1, 22 OCT 2009 to 19 NOV 2009

BIGBEE TRANSITION (IGB.GHM5): From over IGB VORTAC via IGB R-016 and GHM R-198 to GHM VORTAC. Thence. . .

MEMPHIS TRANSITION (MEM.GHM5): From over MEM VORTAC via MEM R-067 and GHM R-246 to GHM VORTAC. Thence. . .

SIDON TRANSITION (SQS.GHM5): From over SQS VORTAC via SQS R-041 and GHM R-222 to GHM VORTAC. Thence. . .

VULCAN TRANSITION (VUZ.GHM5): From over VUZ VORTAC via VUZ R-346 and GHM R-165 to GHM VORTAC. Thence. . .

...TURBOJET/TURBOPROPS; LANDING NORTH: From over GHM VORTAC via BNA R-246 to BNA VORTAC. Expect vectors to final approach course passing GHM VORTAC. LANDING SOUTH: From over GHM VORTAC via BNA R-246 to LINGA. Thence heading 020° for vectors to final approach course. NON-TURBINE; ALL

RUNWAYS: From over GHM VORTAC via BNA R-246 to BNA VORTAC. Expect vectors to final approach course passing GHM VORTAC.

GRAHAM FIVE ARRIVAL (GHM.GHM5)

NASHVILLE, TENNESSEE