

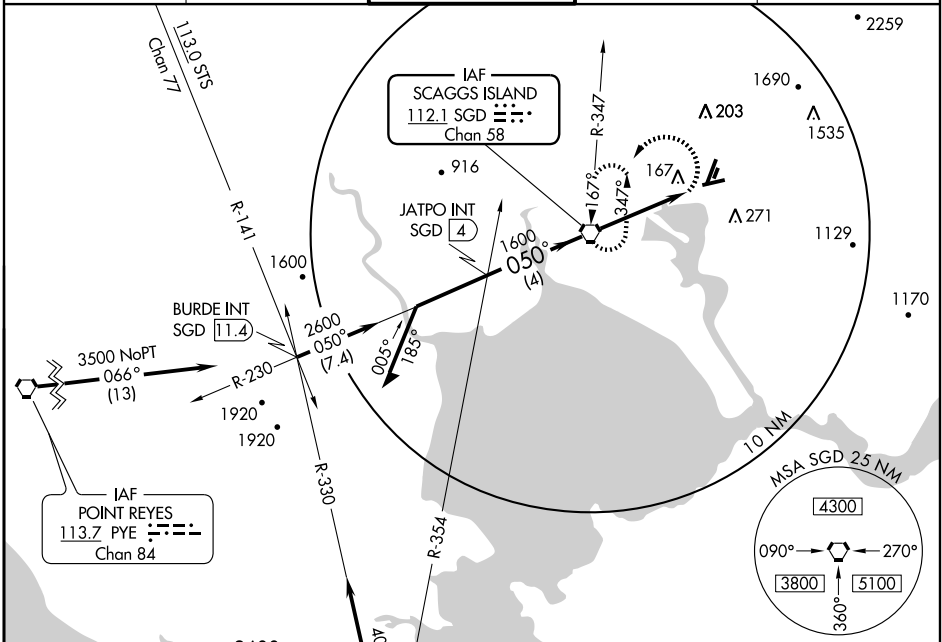
VOR RWY 6

NAPA COUNTY (APC)

VORTAC SGD	APP CRS	Rwy Idg	5007
112.1	050°	TDZE	21
Chan 58		Apt Elev	35

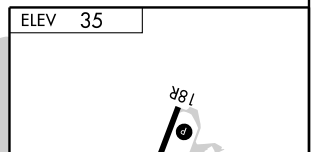
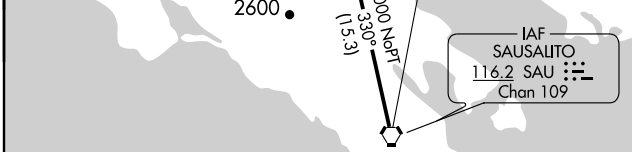
⚠ Circling NA northeast of Rws 18R and 24. MISSED APPROACH: Climbing left turn to 3000 direct SGD VORTAC and hold.

ATIS 124.05	OAKLAND CENTER 127.8 353.5	NAPA TOWER★ 118.7 (CTAF) 257.8	GND CON 121.7	CLNC DEL 127.85
-----------------------	--------------------------------------	--	-------------------------	---------------------------



SW-2, 22 OCT 2009 to 19 NOV 2009

SW-2, 22 OCT 2009 to 19 NOV 2009



CATEGORY	Remain within 10 NM			
	A	B	C	D
S-6	440-1	419 (500-1)	440-1¼	419 (500-1¼)
CIRCLING	600-1 565 (600-1)	620-1 585 (600-1)	720-2 685 (700-2)	1240-3 1205 (1300-3)



ELEV	35
SGD	112.1
TDZE	21

REIL Rwy 6					
MIRL Rws 6-24 and 18R-36L					
FAF to MAP 3.8 NM					
Knots	60	90	120	150	180
Min:Sec	3:48	2:32	1:54	1:31	1:16