

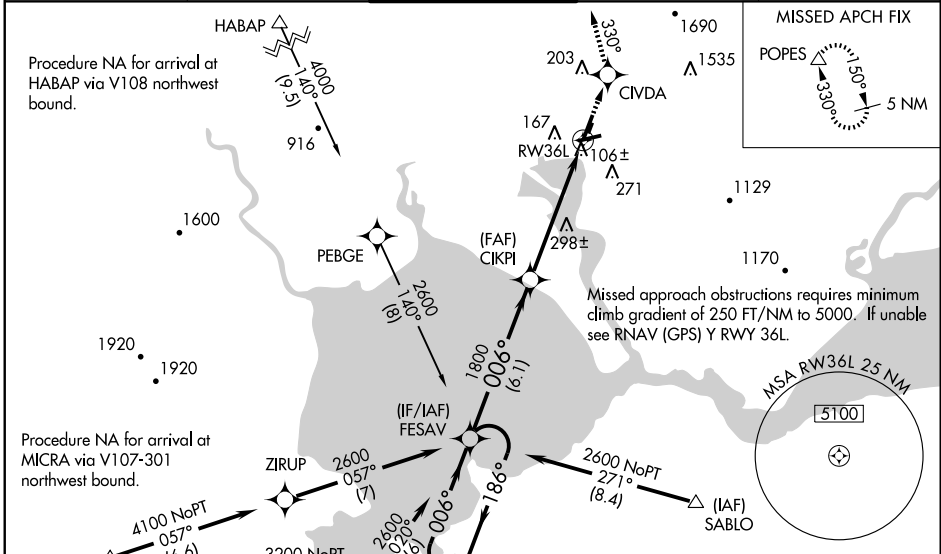
WAAS CH 40313 W36B	APP CRS 006°	Rwy Idg TDZE 17 Apt Elev 35
--	------------------------	---

RNAV (GPS) Z RWY 36L

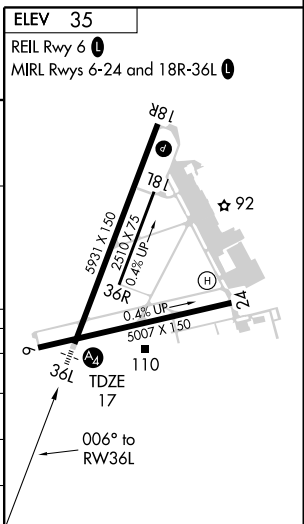
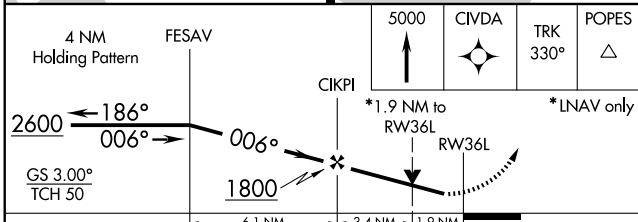
NAPA COUNTY (APC)

<p>⚠ For uncompensated Baro-VNAV systems, LNAV/VNAV NA below -15°C (5°F) or above 49°C (120°F). DME/DME RNP-0.3 NA. Visibility reduction by helicopters NA. When local altimeter setting not received, use Buchanan Field altimeter setting and increase all DA 41 feet, all MDA 60 feet, and increase visibility LPV all Cats. ¼ mile, LNAV/VNAV all Cats. 1 mile, and LNAV Cats. C/D ¼ mile. VDP NA when using Buchanan Field altimeter setting. Baro-VNAV NA when using Buchanan Field altimeter setting.</p>	<p>MALS</p>	<p>MISSED APPROACH: Climb to 5000 direct CIVDA and via track 330° to POPES and hold.</p>
---	--------------------	---

ATIS 124.05	OAKLAND CENTER 127.8 353.5	NAPA TOWER ★ 118.7 (CTAF) 0 257.8	GND CON 121.7	CLNC DEL 127.85
-----------------------	--------------------------------------	---	-------------------------	---------------------------



ELEV 35	REIL Rwy 6	MIRL Rwys 6-24 and 18R-36L
---------	------------	----------------------------



CATEGORY	A	B	C	D
LPV DA		300-1	283 (300-1)	
LNAV/VNAV DA		856-3	839 (900-3)	
LNAV MDA	680-1	663 (700-1)	680-1 3/4 663 (700-1 3/4)	680-2 663 (700-2)
CIRCLING	700-1	665 (700-1)	920-2 3/4 885 (900-2 3/4)	1180-3 1145 (1200-3)

SW-2, 22 OCT 2009 to 19 NOV 2009

SW-2, 22 OCT 2009 to 19 NOV 2009