

RNAV (GPS) Y RWY 36L

NAPA COUNTY (APC)

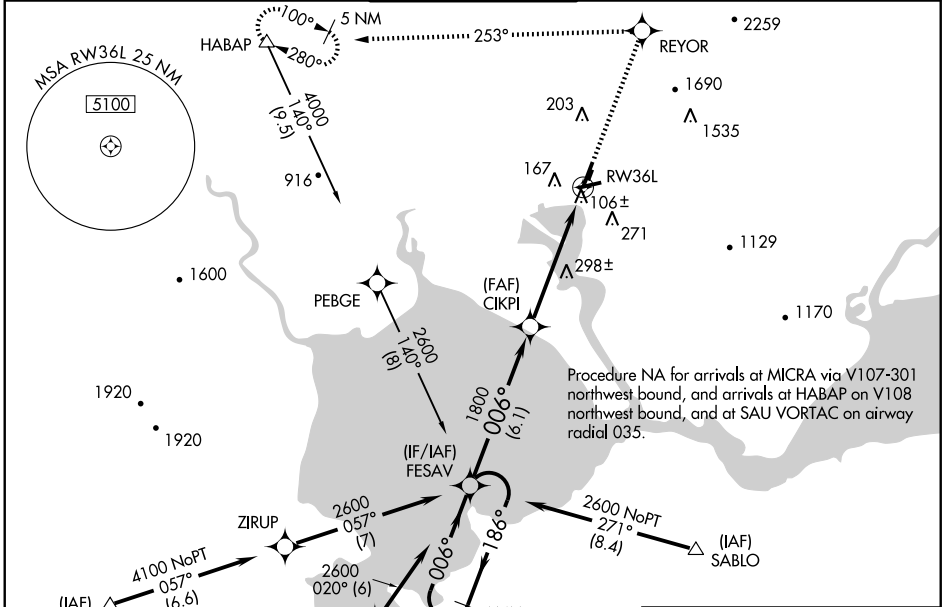
WAAS CH 56613 W36A	APP CRS 006°	Rwy Idg 5931 TDZE 17 Apt Elev 35
--	------------------------	---

⚠ DME/DME RNP-0.3 NA. Visibility reduction by helicopters NA. When local altimeter setting not received, use Buchanan Field altimeter setting and increase all DA 41 feet, all MDA 60 feet. Baro-VNAV NA when using Buchanan Field altimeter setting. For uncompensated Baro-VNAV systems, LNAV/VNAV NA below -30°C (-22°F) or above 49°C (120°F).

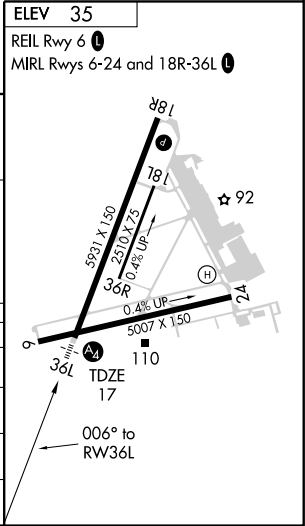
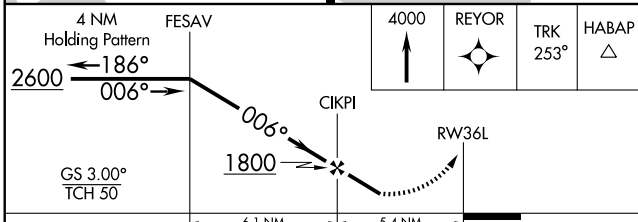
MALS
=

MISSED APPROACH: Climb to 4000 direct REYOR and via track 253° to HABAP and hold.

ATIS 124.05	OAKLAND CENTER 127.8 353.5	NAPA TOWER ★ 118.7 (CTAF) 0 257.8	GND CON 121.7	CLNC DEL 127.85
-----------------------	--------------------------------------	---	-------------------------	---------------------------



ELEV 35	REIL Rwy 6	MIRL Rwys 6-24 and 18R-36L
---------	------------	----------------------------



CATEGORY	A	B	C	D
LPV DA		1202-5	1185 (1200-5)	
LNAV/VNAV DA		1419-5	1402 (1400-5)	
LNAV MDA	1620-1¼ 1603 (1600-1¼)	1620-1½ 1603 (1600-1½)	1620-3	1603 (1600-3)
CIRCLING	1620-1¼ 1585 (1600-1¼)	1620-1½ 1585 (1600-1½)	1620-3	1585 (1600-3)

SW-2, 22 OCT 2009 to 19 NOV 2009

SW-2, 22 OCT 2009 to 19 NOV 2009