

LIZRD THREE DEPARTURE

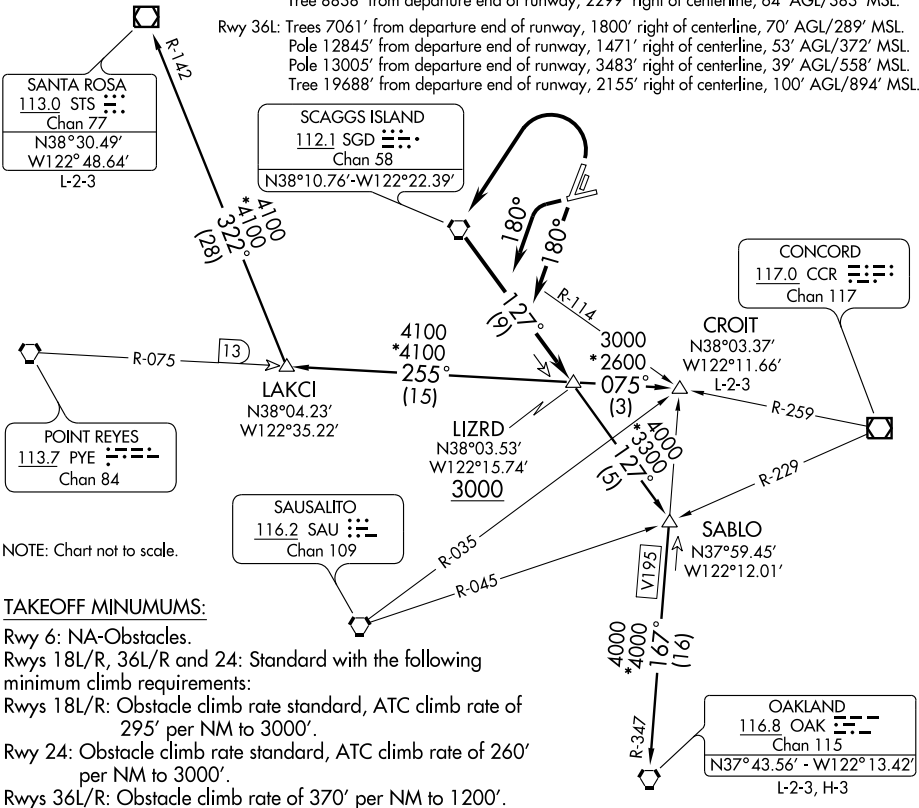
SL-281 (FAA)

NAPA COUNTY (APC)
NAPA, CALIFORNIA

ATIS 124.05
GND CON
121.7
OAKLAND CENTER
127.8 353.5

TAKEOFF OBSTACLES:

- Rwy 18L: Tree 4982' from departure end of runway, 237' left of centerline, 58' AGL/92'MSL.
- Rwy 24: Bridge 4964' from departure end of runway, 1716' right of centerline, 167' AGL/167'MSL.
- Rwy 36R: Floodlight 462' from departure end of runway, 339' right of centerline, 29' AGL/53' MSL.
- Tree 8701' from departure end of runway, 1286 right of centerline, 70' AGL/289' MSL.
- Tree 8838' from departure end of runway, 2299' right of centerline, 64' AGL/383' MSL.
- Rwy 36L: Trees 7061' from departure end of runway, 1800' right of centerline, 70' AGL/289' MSL.
- Pole 12845' from departure end of runway, 1471' right of centerline, 53' AGL/372' MSL.
- Pole 13005' from departure end of runway, 3483' right of centerline, 39' AGL/558' MSL.
- Tree 19688' from departure end of runway, 2155' right of centerline, 100' AGL/894' MSL.



NOTE: Chart not to scale.

TAKEOFF MINIMUMS:

- Rwy 6: NA-Obstacles.
- Rwys 18L/R, 36L/R and 24: Standard with the following minimum climb requirements:
- Rwys 18L/R: Obstacle climb rate standard, ATC climb rate of 295' per NM to 3000'.
- Rwy 24: Obstacle climb rate standard, ATC climb rate of 260' per NM to 3000'.
- Rwys 36L/R: Obstacle climb rate of 370' per NM to 1200'.

DEPARTURE ROUTE DESCRIPTION

- TAKE-OFF RUNWAYS 18L/R:** Climb via 180° heading to intercept and proceed outbound via the SGD R-127 to LIZRD INT. Cross LIZRD INT at or above 3000'. Thence. . .
- TAKE-OFF RUNWAY 24:** Turn left, climb via 180° heading to intercept and proceed outbound via the SGD R-127 to LIZRD INT. Cross LIZRD INT at or above 3000'. Thence. . .
- TAKE-OFF RUNWAYS 36L/R:** Turn left direct SGD VORTAC, proceed outbound via the SGD R-127 to LIZRD INT. Cross LIZRD INT at or above 3000'. Thence. . .
. . . via (transition) or (assigned route).
- CROIT TRANSITION (LIZRD3.CROIT):** From over LIZRD INT via PYE R-075 to CROIT INT.
- OAKLAND TRANSITION (LIZRD3.OAK):** From over LIZRD INT via SGD R-127 and OAK R-347 to OAK VORTAC.
- SANTA ROSA TRANSITION (LIZRD3.STS):** From over LIZRD INT via PYE R-075 and STS R-142 to STS VOR/DME.

LIZRD THREE DEPARTURE

SW-2, 22 OCT 2009 to 19 NOV 2009

SW-2, 22 OCT 2009 to 19 NOV 2009