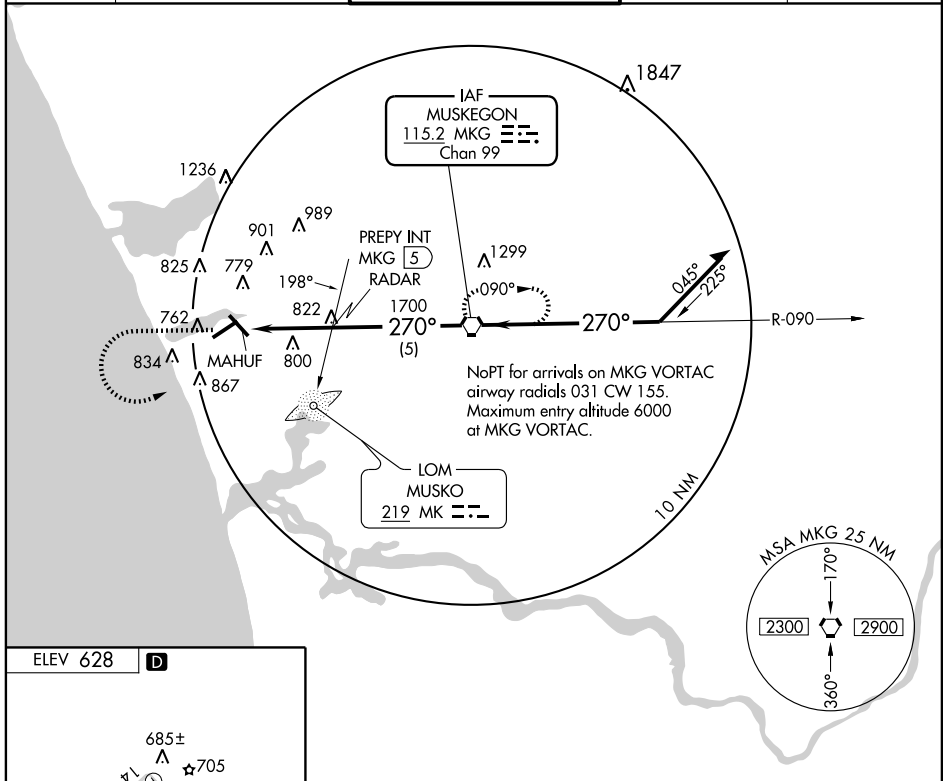


VORTAC MKG <b>115.2</b> Chan <b>99</b>	APP CRS <b>270°</b>	Rwy Idg TDZE Apt Elev <b>N/A</b> <b>N/A</b> <b>628</b>
--	------------------------	---

**VOR-A**  
MUSKEGON COUNTY (MKG)

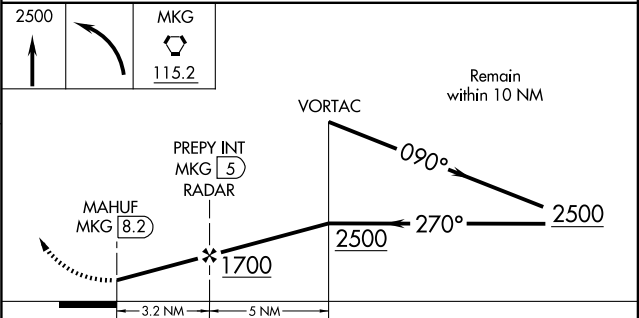
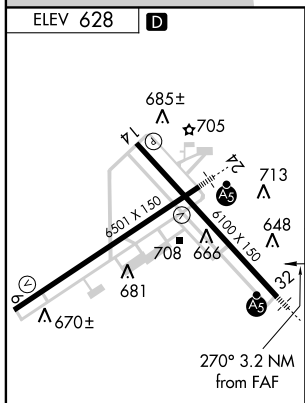
<p><b>ADF, DME or RADAR REQUIRED.</b> If local altimeter setting not received, use Tulip City altimeter setting and increase all MDAs 80 feet.</p>	<p><b>MISSED APPROACH:</b> Climb to 2500 then left turn direct MKG VORTAC and hold.</p>
--	---

ATIS <b>124.3</b>	MUSKEGON APP CON * <b>118.2 339.1</b> <b>119.8 339.1</b> (N of V2)	MUSKEGON TOWER* <b>126.25</b> (CTAF) <b>0 363.1</b>	GND CON <b>121.6</b>	UNICOM <b>122.95</b>
----------------------	--	--	-------------------------	-------------------------



EC-1, 22 OCT 2009 to 19 NOV 2009

EC-1, 22 OCT 2009 to 19 NOV 2009



FAF to MAP 3.2 NM				
CATEGORY	A	B	C	D
CIRCLING	1100-1	472 (500-1)	1180-1½ 552 (600-1½)	1220-2 592 (600-2)
Knots	60	90	120	150
Min:Sec	3:12	2:08	1:36	1:17
			180	1:04