


RNAV (GPS) RWY 32

MUSKEGON COUNTY (MKG)

WAAS CH 63010 W32A	APP CRS 321°	Rwy Idg TDZE Aprt Elev	6100 629 629
--	------------------------	------------------------------	---

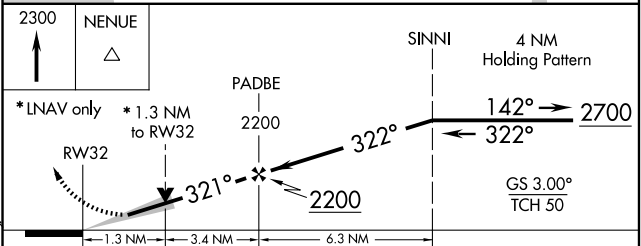
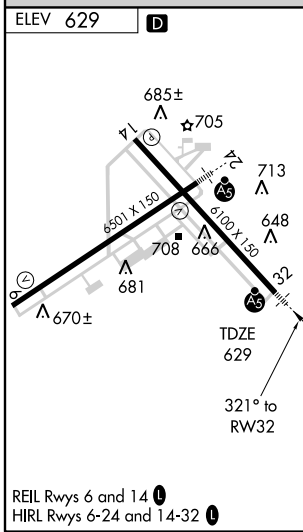
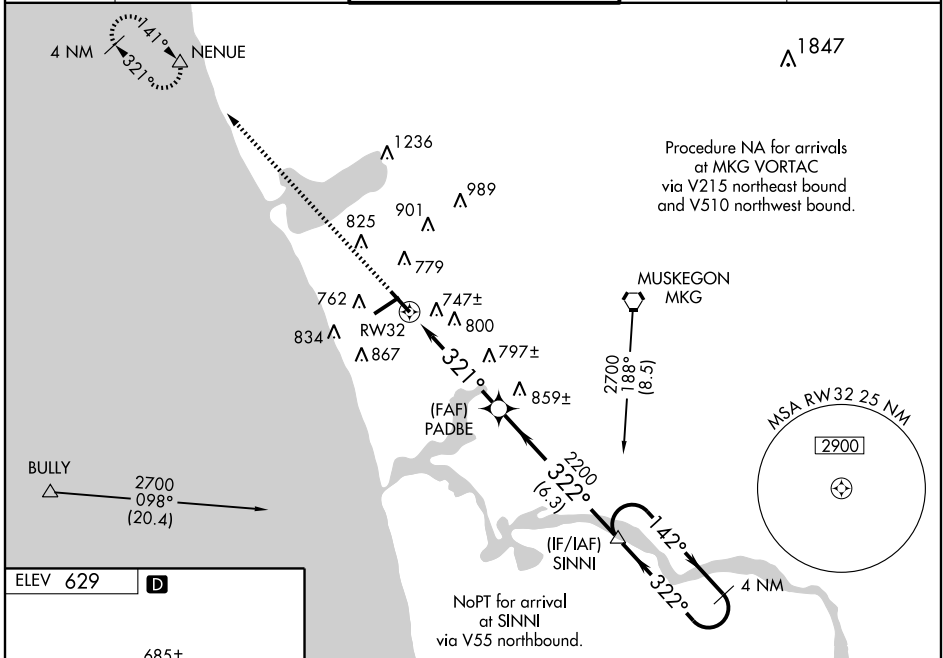
⚠ For inoperative MALS, increase LPV all Cats visibility to RVR 5000. Baro-VNAV NA when using Fremont altimeter setting. For uncompensated Baro-VNAV systems, LNAV/VNAV NA below -16°C (4°F) or above 47°C (116°F). DME/DME RNP-0.3 NA. When local altimeter setting not received, use Fremont altimeter setting and increase all DA 65 feet, all MDA 80 feet, increase LPV all Cats visibility to RVR 4000, LNAV/VNAV all Cats visibility to RVR 6000, LNAV Cat C visibility to RVR 5000 and LNAV Cat D visibility to RVR 6000. VDP NA when using Fremont altimeter setting.

MALSR



MISSED APPROACH:
Climb to 2300 direct NENUE and hold.

ATIS 124.3	MUSKEGON APP CON * 118.2 339.1 (N of V2) 119.8 339.1 (S of V2)	MUSKEGON TOWER * 126.25 (CTAF) 0 363.1	GND CON 121.6	UNICOM 122.95
----------------------	--	---	-------------------------	-------------------------



CATEGORY	A	B	C	D
LPV DA		913/24	284 (300-½)	
LNAV/VNAV DA		1029/50	400 (400-1)	
LNAV MDA	1100/24	471 (500-½)	1100/40 471 (500-¾)	1100/50 471 (500-1)
CIRCLING	1100-1	471 (500-1)	1140-1½ 511 (600-1½)	1180-2 551 (600-2)

EC-1, 22 OCT 2009 to 19 NOV 2009

EC-1, 22 OCT 2009 to 19 NOV 2009