

RNAV (GPS) RWY 24

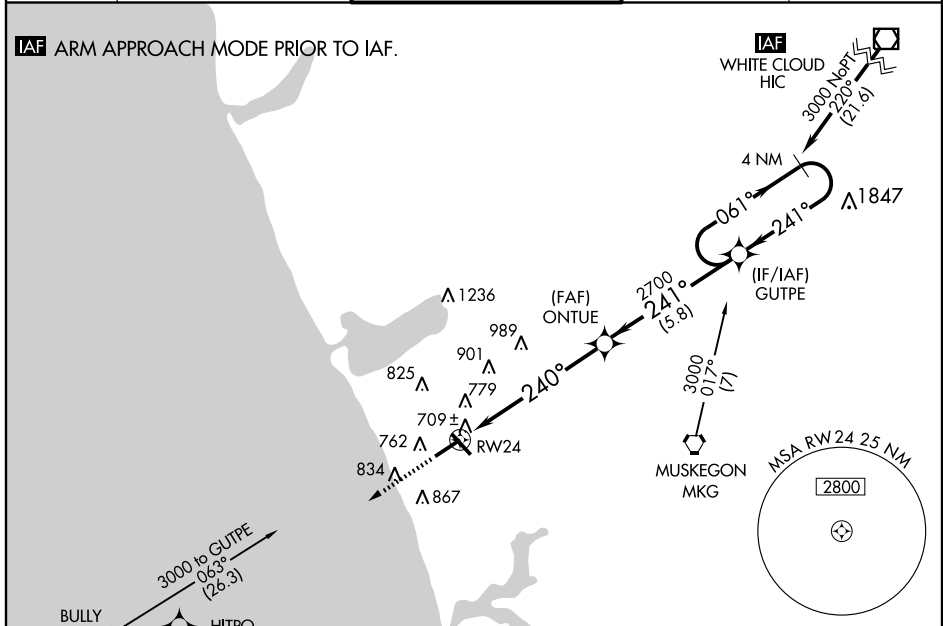
MUSKEGON COUNTY (MKG)

APP CRS 240°	Rwy Idg 6501
	TDZE 627
	Apt Elev 628

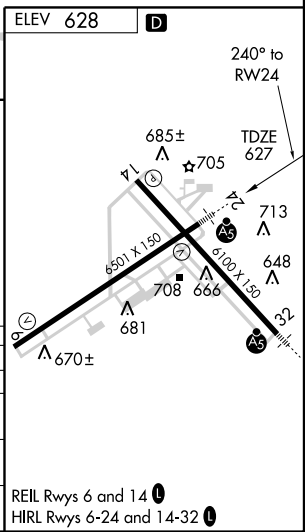
NA ASR	BARO-VNAV NA below -16°C (4°F). DME/DME RNP -0.3 NA.
------------------	---

MALSR 	MISSED APPROACH: Climb to 3000 via 240° course to HITPO WP and hold.
-----------	---

ATIS 124.3	MUSKEGON APP CON ★ 118.2 339.1 (N of V2) 119.8 339.1 (S of V2)	MUSKEGON TOWER ★ 126.25 (CTAF) 363.1	GND CON 121.6	UNICOM 122.95
----------------------	--	---	-------------------------	-------------------------



3000	240° course	HITPO	GUTPE	4 NM Holding Pattern
CATEGORY	A	B	C	D
GLS PA DA	NA			
LNAV/VNAV DA	1080-1 453 (500-1)			
LNAV MDA	1100-½ 473 (500-½)	1100-¾ 473 (500-¾)	1100-1 473 (500-1)	
CIRCLING	1100-1½ 472 (500-1½)	1140-1½ 512 (600-1½)	1180-2 552 (600-2)	



EC-1, 22 OCT 2009 to 19 NOV 2009

EC-1, 22 OCT 2009 to 19 NOV 2009