

# RNAV (GPS) RWY 14

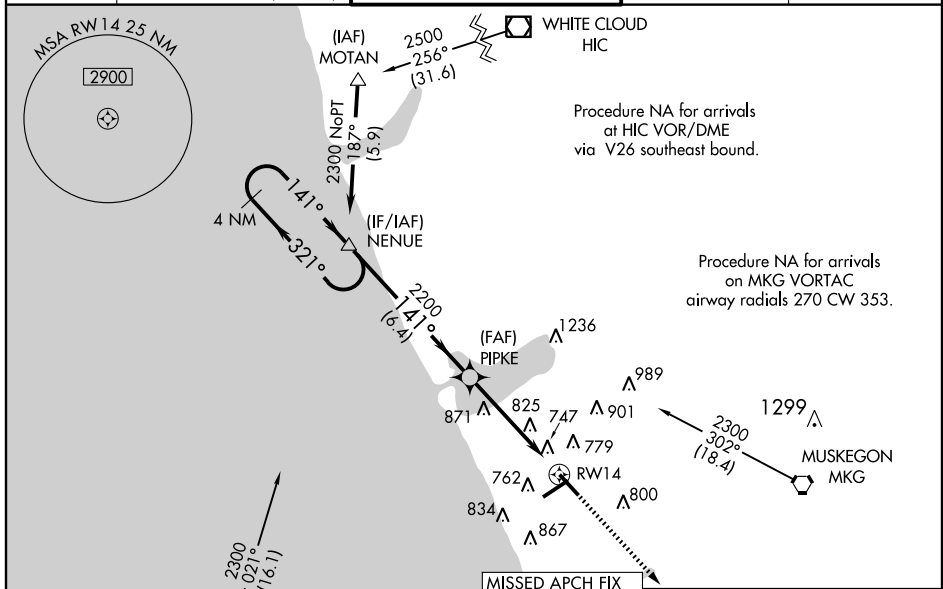
MUSKEGON COUNTY (MKG)

WAAS CH <b>69410</b> <b>W14A</b>	APP CRS <b>141°</b>	Rwy Idg TDZE Apt Elev	<b>6100</b> <b>627</b> <b>629</b>
--	------------------------	-----------------------------	---

**▼** Baro-VNAV NA when using Fremont altimeter setting. For uncompensated Baro-VNAV systems, LNAV/VNAV NA below -16°C (4°F) or above 47°C (116°F).  
**▲** DME/DME RNP-0.3 NA. Visibility reduction by helicopters NA. When local altimeter setting not received, use Fremont altimeter setting and increase all DA 65 feet and all MDA 80 feet, increase LPV all Cats, LNAV/VNAV all Cats, LNAV Cats C and D, and Circling Cat C visibility 1/4 mile. VDP NA when using Fremont altimeter setting.

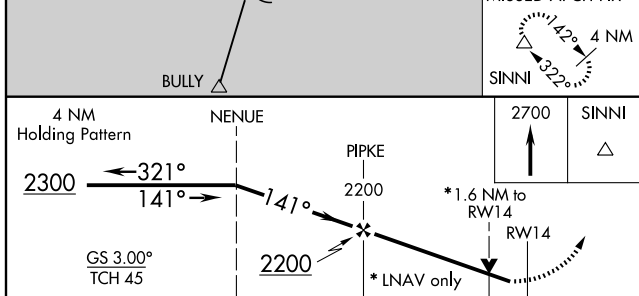
**MISSED APPROACH:**  
Climb to 2700 direct SINNI and hold.

ATIS <b>124.3</b>	MUSKEGON APP CON * <b>118.2 339.1</b> (N of V2) <b>119.8 339.1</b> (S of V2)	MUSKEGON TOWER * <b>126.25 (CTAF) 0 363.1</b>	GND CON <b>121.6</b>	UNICOM <b>122.95</b>
----------------------	--	--	-------------------------	-------------------------



EC-1, 22 OCT 2009 to 19 NOV 2009

EC-1, 22 OCT 2009 to 19 NOV 2009



CATEGORY	A	B	C	D
LPV DA		877-3/4	250 (300-3/4)	
LNAV/VNAV DA		1079-1 1/2	452 (500-1 1/2)	
LNAV MDA	1180-1	553 (600-1)	1180-1 1/2 553 (600-1 1/2)	1180-1 3/4 553 (600-1 3/4)
CIRCLING	1180-1	551 (600-1)	1180-1 1/2 551 (600-1 1/2)	1180-2 551 (600-2)

