

ILS or LOC RWY 32

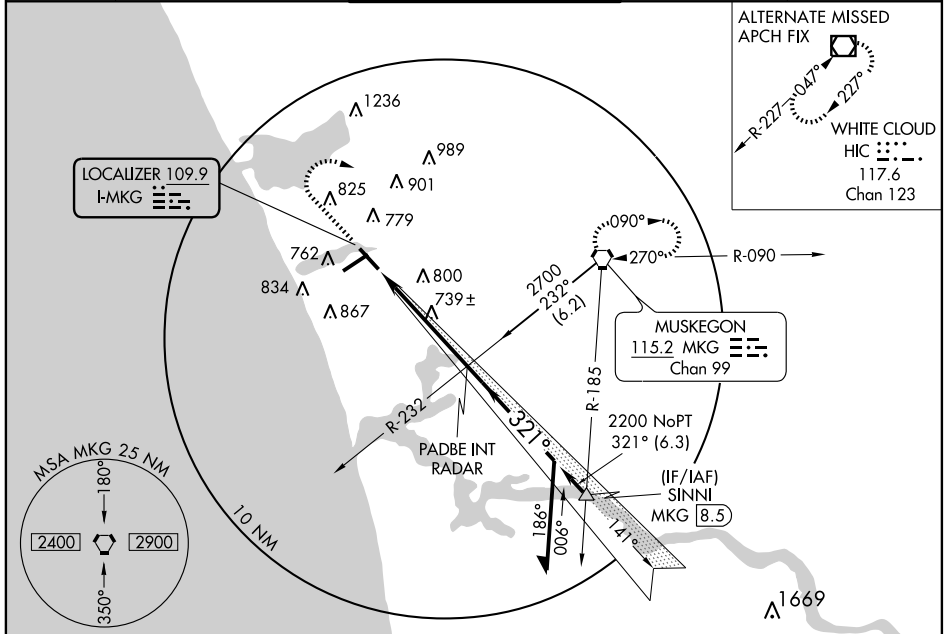
MUSKEGON COUNTY (MKG)

| | | |
|---------------------------|------------------------|------------------------|
| LOC I-MKG 109.9 | APP CRS 321° | Rwy Idg 6100 |
| | | TDZE 629 |
| | | Apt Elev 629 |

ASR *RVR 1800 authorized with the use of FD or AP or HUD to DA. When local altimeter setting not received, use Fremont altimeter setting and increase DA 65 feet, and all MDA 80 feet, increase S-LOC Cat C visibility to RVR 4000, Cat D visibility to RVR 5000.

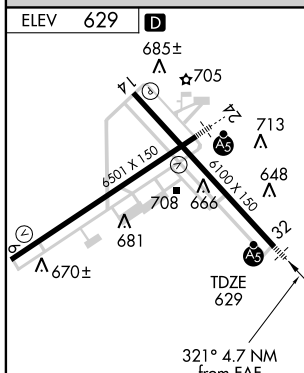
MALSR MISSED APPROACH: Climb to 2500 then right turn direct MKG VORTAC and hold.

| | | | | |
|----------------------|---|--|-------------------------|-------------------------|
| ATIS 124.3 | MUSKEGON APP CON * 118.2 339.1 119.8 339.1 (S of V2) | MUSKEGON TOWER * 126.25 (CTAF) 363.1 | GND CON 121.6 | UNICOM 122.95 |
|----------------------|---|--|-------------------------|-------------------------|



EC-1, 22 OCT 2009 to 19 NOV 2009

EC-1, 22 OCT 2009 to 19 NOV 2009



| | |
|-------------------------|--------------------------|
| REIL Rwy 6 and 14 | |
| HIRL Rwy 6-24 and 14-32 | |
| FAF to MAP 4.7 NM | |
| Knots | 60 90 120 150 180 |
| Min:Sec | 4:42 3:08 2:21 1:53 1:34 |

| CATEGORY | A | B | C | D |
|----------|----------------------|---|----------------------|---------------------|
| S-ILS 32 | * 829/24 200 (200-½) | | | |
| S-LOC 32 | 1000/24 371 (400-½) | | | 1000/40 371 (400-¾) |
| CIRCLING | 1080-1 451 (500-1) | | 1140-1½ 511 (600-1½) | 1180-2 551 (600-2) |