

VOR RWY 29

MUSCLE SHOALS/NORTHWEST ALABAMA RGNL (MSL)

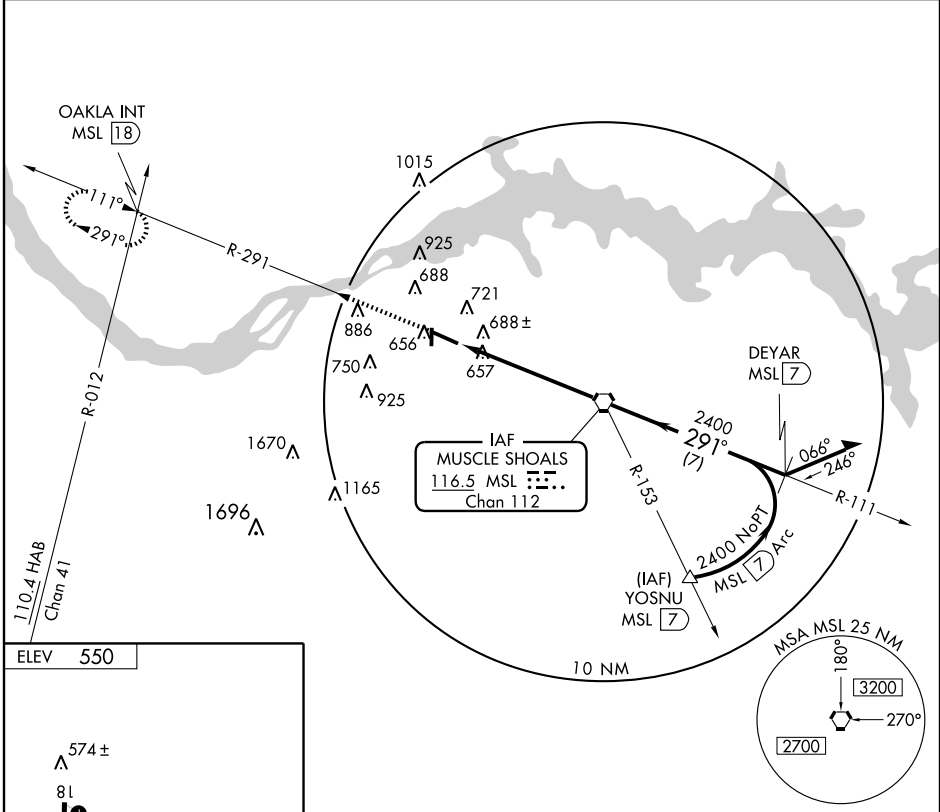
VORTAC MSL 116.5	APP CRS 291°	Rwy Idg 6694
Chan 112		TDZE 550
		Apt Elev 550

NA For inoperative MALSR, increase S-29 Cat. D visibility to 1¼.
Circling NA at night to Rwy 18.

MALSR
AS

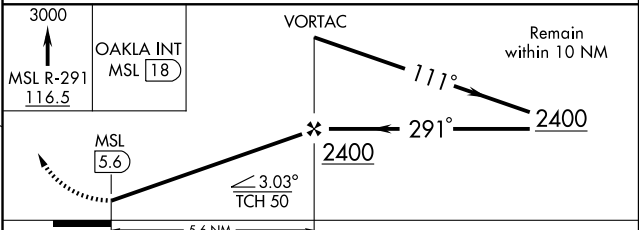
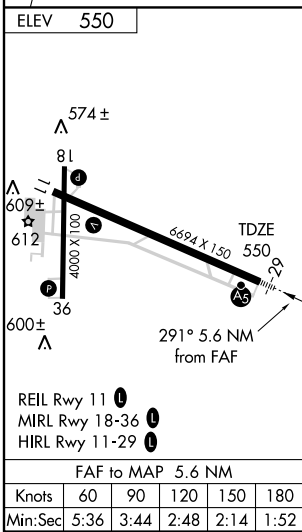
MISSED APPROACH: Climb to 3000 via MSL R-291 to OAKLA Int/MSL 18 DME and hold.

ASOS 119.425	MEMPHIS CENTER 120.8 307.0	UNICOM 123.05 (CTAF) 0
------------------------	--------------------------------------	----------------------------------



SE-4, 22 OCT 2009 to 19 NOV 2009

SE-4, 22 OCT 2009 to 19 NOV 2009



CATEGORY	A	B	C	D
S-29	960-½ 410 (500-½)		960-¾ 410 (500-¾)	960-1 410 (500-1)
CIRCLING	1040-1 490 (500-1)		1040-1½ 490 (500-1½)	1100-2 550 (600-2)