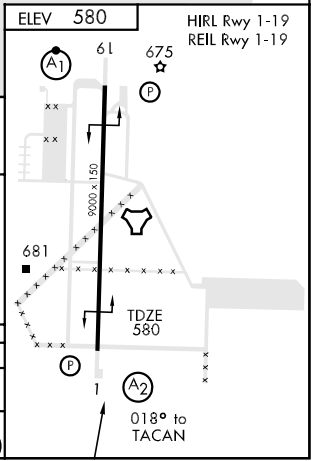
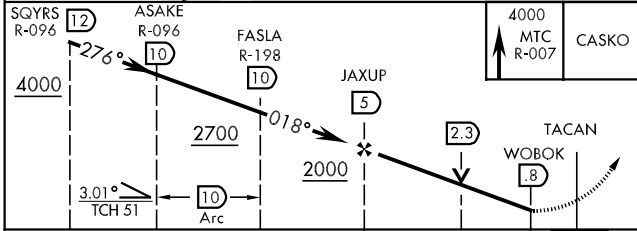
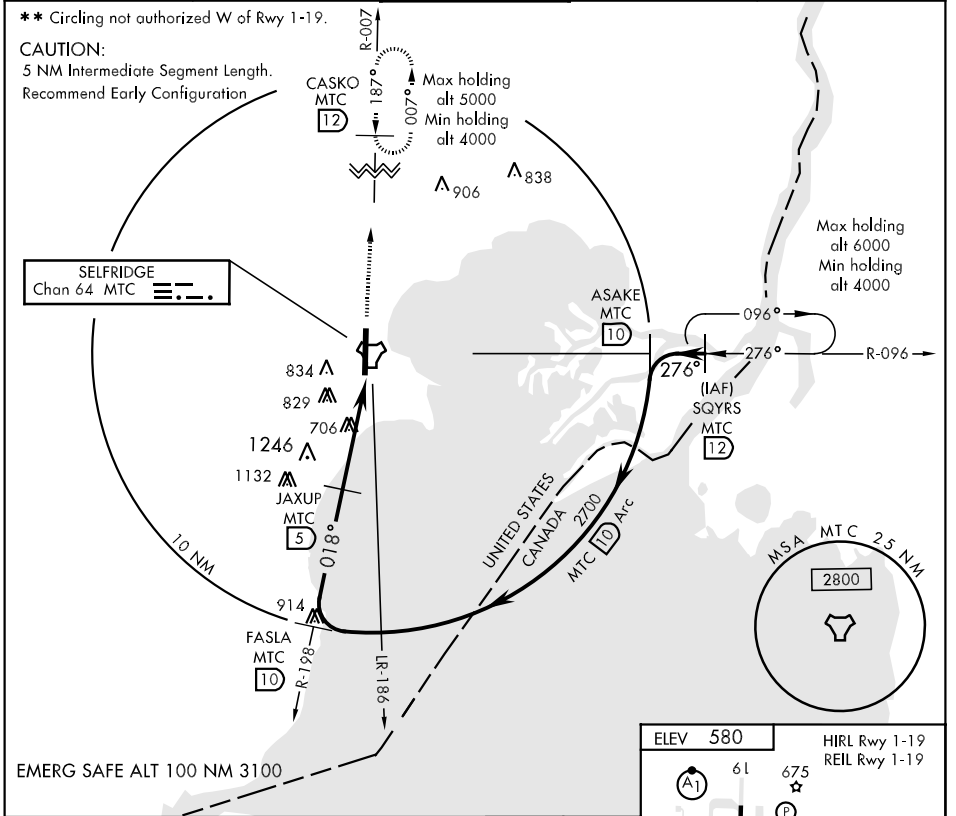


TACAN MTC Chan 64	APCH CRS 018°	Rwy ldg TDZE 580 Arpt Elev 580	AL-276 [USAF]	SELFDRIGE ANGB (KMTC)
▼ * When ALS inop, increase CAT AB RVR to 50 and vis to 1 mile, CAT C vis to 1½ miles, CAT D vis to 1¾ miles, CAT E vis to 2 miles.			SALS 	MISSED APPROACH: Climb to 4000, intercept MTC R-007 to CASKO and hold, continue climb-in-hold to 4000.

ATIS 125.325 270.1	SELFDRIGE APP CON 119.6 318.2	SELFDRIGE TOWER 120.15 225.4	GND CON 128.3 275.8	CLNC DEL 119.0 259.95
-----------------------	----------------------------------	---------------------------------	------------------------	--------------------------



CATEGORY	A	B	C	D	E
S-1 *	1140/40 560 (600-34)		1140/60 560 (600-134)	1140-1½ 560 (600-1½)	1140-1¾ 560 (600-1¾)
CIRCLING **	1140-1 560 (600-1)		1140-1½ 560 (600-1½)	1160-2 580 (600-2)	1200-2¼ 620 (700-2¼)

EC-1, 22 OCT 2009 to 19 NOV 2009

EC-1, 22 OCT 2009 to 19 NOV 2009