

TACAN MTC Chan 64	APCH CRS 177°	Rwy Idg TDZE Arpt Elev	9000 579 580
----------------------	------------------	------------------------------	--------------------

JAL-276 [USAF]

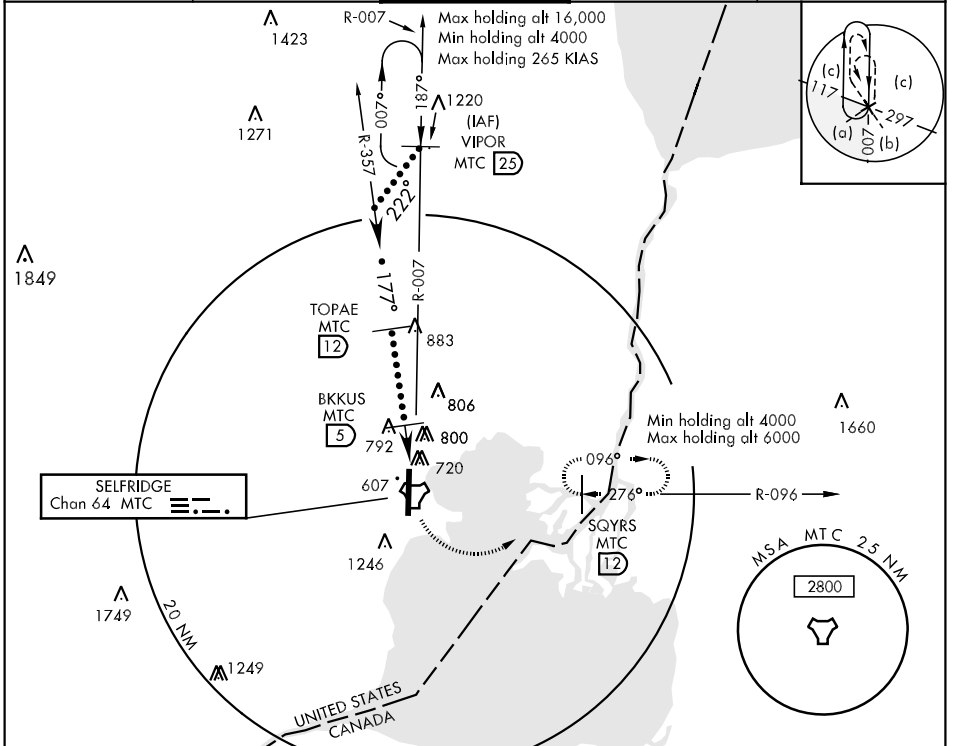
SELFRIDGE ANGB (KMTC)

* When ALS inop, increase CAT C vis to 1¾ miles, CAT D vis to 2 miles, CAT E vis to 2¼ miles.
 ** Circling not authorized W of Rwy 1-19.

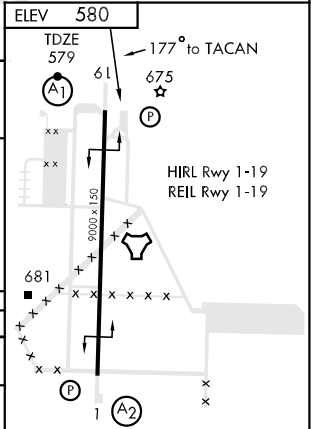
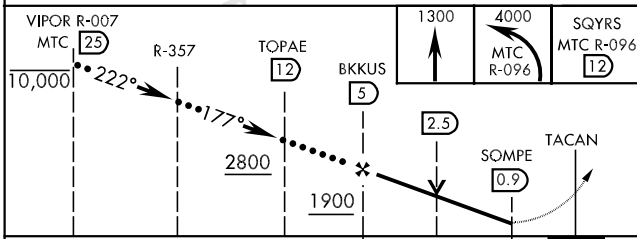


MISSED APPROACH: Climb to 1300 then climbing left turn to 4000, intercept MTC TACAN R-096 to SQYRS and hold, continue climb-in-hold to 4000.

ATIS 125.325 270.1	SELFRIDGE APP CON 119.6 318.2	SELFRIDGE TOWER 120.15 225.4	GND CON 128.3 275.8	CLNC DEL 119.0 259.95
-----------------------	----------------------------------	---------------------------------	------------------------	--------------------------



EMERG SAFE ALT 100 NM 3100



CATEGORY	C	D	E
S-19 *	1180/60 601 (600-1¼)	1180-1½ 601 (600-1½)	1180-1¾ 601 (600-1¾)
CIRCLING **	1180-1¾ 600 (600-1¾)	1180-2 600 (600-2)	1200-2¼ 620 (700-2¼)

EC-1, 22 OCT 2009 to 19 NOV 2009

EC-1, 22 OCT 2009 to 19 NOV 2009