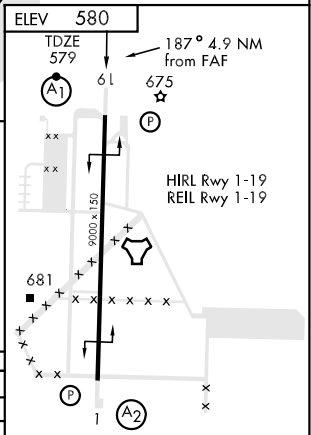
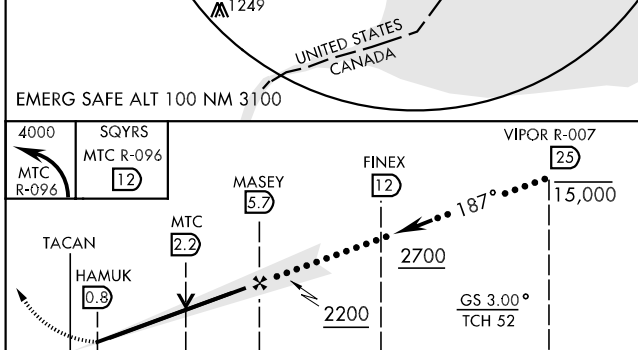
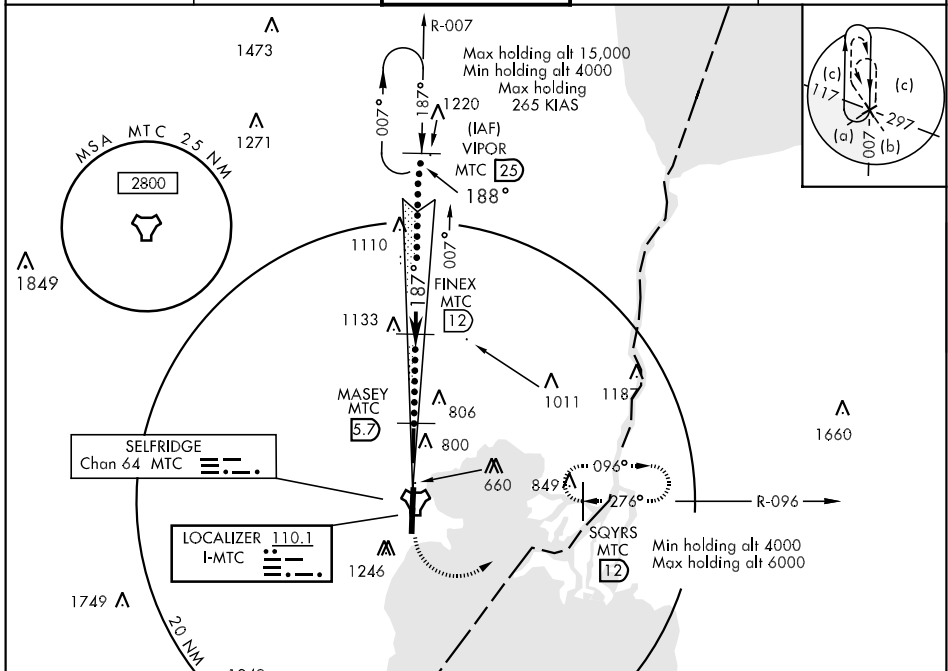


LOC I-MTC 110.1	APCH CRS 187°	Rwy Idg TDZE Arpt Elev 9000 579 580	JAL-276 [USAF]	SELFRIDGE ANGB (KMTC)
---------------------------	-------------------------	---	----------------	-----------------------

▲ * When ALS inop, increase RVR to 50 and vis to 1 mile.
****** When ALS inop, increase CAT CD vis to 1½ miles, CAT E vis to 1¾ miles.
******* Circling not authorized W of Rwy 1-19.

ALSIF-1
A1 MISSED APPROACH: Climbing left turn to 4000, intercept MTC R-096 to SQYRS and hold, continue climb-in-hold to 4000..

ATIS 125.325 270.1	SELFRIDGE APP CON 119.6 318.2	SELFRIDGE TOWER 120.15 225.4	GND CON 128.3 275.8	CLNC DEL 119.0 259.95
------------------------------	---	--	-------------------------------	---------------------------------



CATEGORY	C	D	E
S-ILS 19*	882/40	303 (400-¾)	1080/60
S-LOC 19**	1080/50	501 (500-1)	501 (500-1¼)
CIRCLING ***	1140-1½ 560 (600-1½)	1160-2 580 (600-2)	1200-2¼ 620 (700-2¼)

FAF to MAP 4.9 NM					
Knots	120	140	160	180	200
Min:Sec	2:27	2:06	1:50	1:38	1:28

EC-1, 22 OCT 2009 to 19 NOV 2009

EC-1, 22 OCT 2009 to 19 NOV 2009