

LOC I-MXF 109.3	APCH CRS 150°	Rwy Idg TDZE Arpt Elev 8013 171 171	AL-274 [USAF]	MAXWELL AFB (KMXF)
---------------------------	-------------------------	---	---------------	--------------------

* When ALS inop, increase RVR to 40 and vis to ¼ mile.
 ** When ALS inop, increase CAT ABC RVR to 50 and vis to 1 mile, CAT DE RVR to 60 and vis to 1¼ miles.
 *** Circling not authorized E of Rwy 15-33.

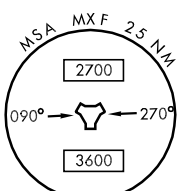
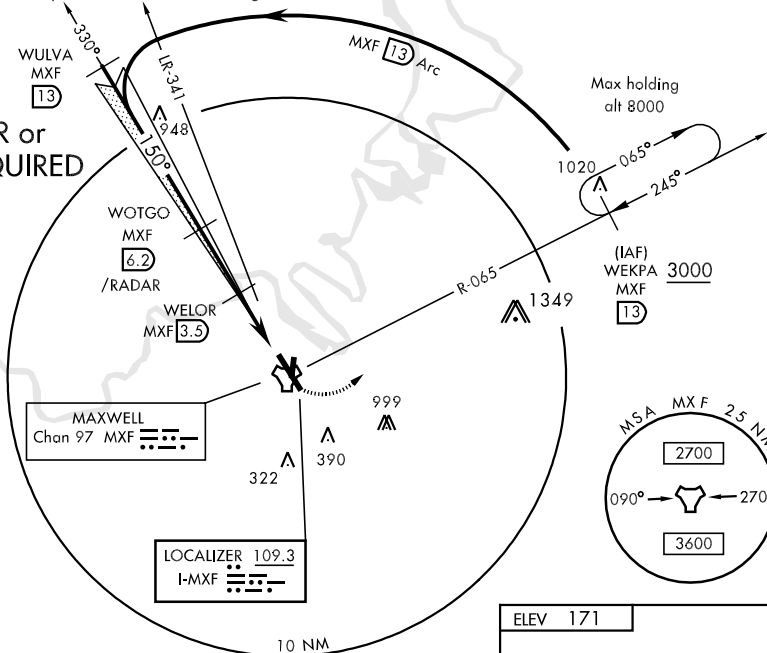
 ALSF-1
A1

 MISSED APPROACH: Climb to 1000 then climbing left turn to 3000 direct WEKPA and hold.

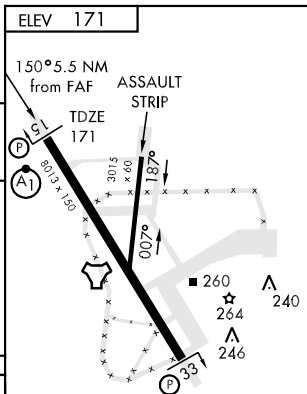
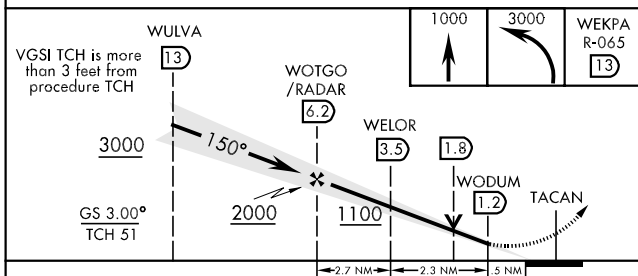
ATIS * 134.7 269.9	MONTGOMERY APP CON 121.2 380.225	MAXWELL TOWER * 118.15 253.5	GND CON 127.15 289.4
------------------------------	--	--	--------------------------------

MXF DME available on freq. 115.0.
Missed Approach requires ATC RADAR monitoring.

RADAR or DME REQUIRED



EMERG SAFE ALT 100 NM 5100



CATEGORY	A	B	C	D	E
S-ILS 15 *	371/24		200 (200-½)		
S-LOC 15 **	560/24	389 (400-½)	560/40 389 (400-¾)		
CIRCLING ***	680-1	509 (600-1)	680-1½ 509 (600-1½)	740-2 569 (600-2)	N/A

HIRL Rwy 15-33					
FAF to MAP 5 NM					
Knots	60	90	120	150	180
Min:Sec	5:00	3:20	2:30	2:00	1:40

SE-4, 22 OCT 2009 to 19 NOV 2009

SE-4, 22 OCT 2009 to 19 NOV 2009