

RNAV (GPS) Y RWY 28L

MONTEREY PENINSULA (MR Y)

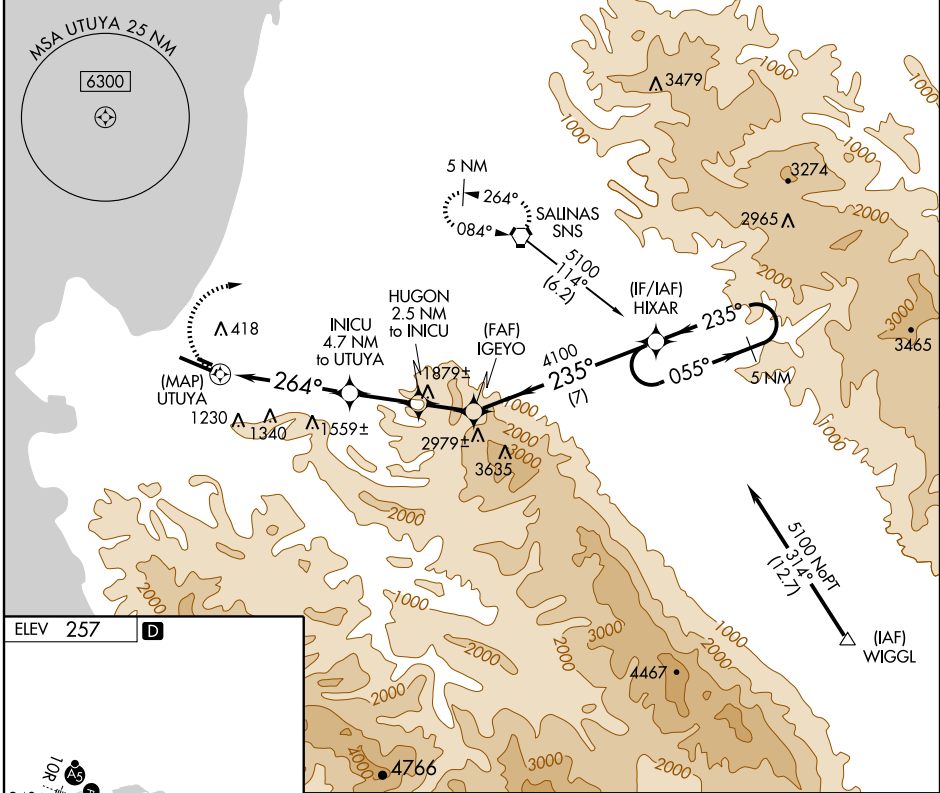
APP CRS	Rwy Idg	6616
264°	TDZE	247
	Apt Elev	257

▽ Circling NA south of Rwy 10R-28L.
▲ DME/DME RNP -0.3 NA.
 Visibility reduction by helicopters NA.

MISSED APPROACH: Climbing right turn to 6000 direct to SNS VORTAC and hold, continue climb-in-hold to 6000.

ATIS	NORCAL APP CON	MONTEREY TOWER *	GND CON	CLNC DEL	UNICOM
119.25	133.0 251.15 (360°-150°) 127.15 307.125 (151°-359°)	118.4 (CTAF) 0 257.8	121.9 348.6	135.45	122.95

Procedure NA for arrivals on SNS VORTAC airway radials 068 CW 167.



SW-2, 22 OCT 2009 to 19 NOV 2009

SW-2, 22 OCT 2009 to 19 NOV 2009

ELEV 257 **D**

MIRL Rwy 10L-28R
 HIRL Rwy 10R-28L
 REIL Rwy 28L

6000	SNS	VGSIs and descent angles not coincident		HIXAR	5 NM
		HUGON	IGEYO		Holding Pattern
		2.5 NM to INICU	≤ 3.70° TCH 47'	235°	5100
		INICU 4.7 NM to UTUYA	264°	235°	
		2300	3300	4100	
		0.5	4.7 NM	2.5 NM	2 NM
					7 NM
CATEGORY	A	B	C	D	
LNAV MDA	1600/60 1353 (1400-1¼)	1600-1½ 1353 (1400-1½)	1600-3 1353 (1400-3)	NA	
CIRCLING	1600-1¼ 1343 (1400-1¼)	1600-1½ 1343 (1400-1½)	1600-3 1343 (1400-3)	NA	