

# RNAV (RNP) Z RWY 28L

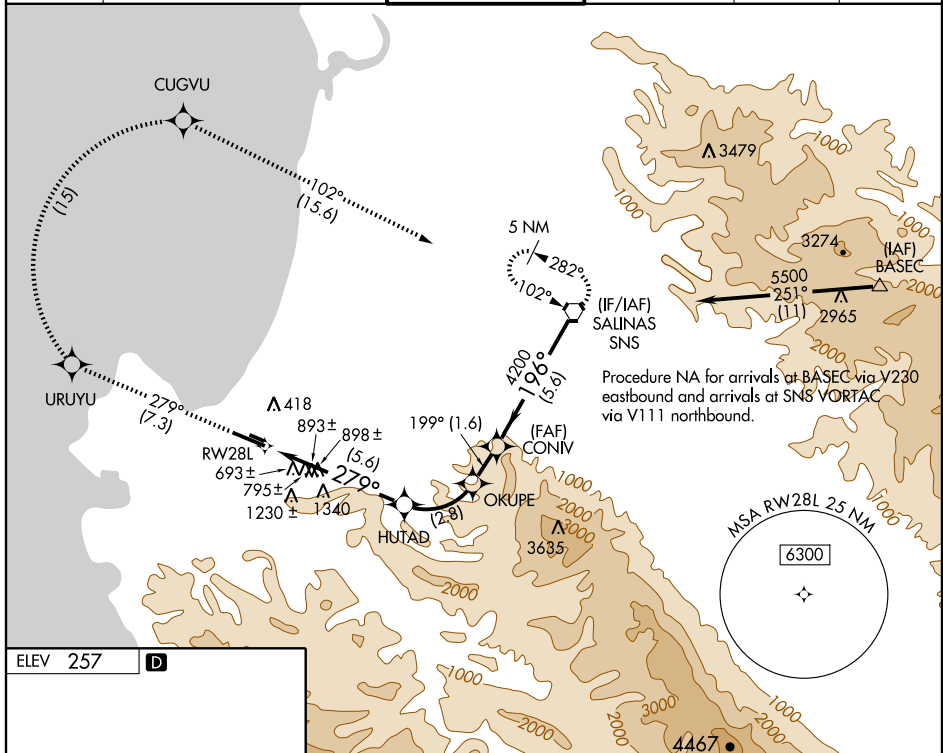
MONTEREY PENINSULA (MR Y)

APP CRS	Rwy Idg	<b>6616</b>
<b>279°</b>	TDZE	<b>247</b>
	Apt Elev	<b>257</b>

**RF and GPS required.** When VGSI inoperative, RNP 0.30 DA NA at night.  
**NA** For uncompensated Baro-VNAV systems, procedure NA below 0°C (32°F) or above 39°C (102°F). Visibility reduction by helicopters NA.

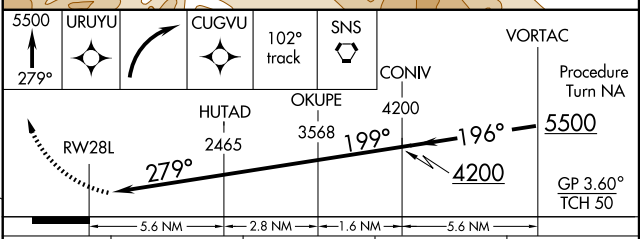
**MISSED APPROACH:** Climb to 5500 via 279° track to URUYU and via right turn to CUGVU and via 102° track to SNS VORTAC and hold.

ATIS <b>119.25</b>	NORCAL APP CON <b>133.0 251.15</b> (360°-150°) <b>127.15 307.125</b> (151°-359°)	MONTEREY TOWER* <b>118.4</b> (CTAF) <b>0257.8</b>	GND CON <b>121.9 348.6</b>	CLNC DEL <b>135.45</b>	UNICOM <b>122.95</b>
-----------------------	--	--	-------------------------------	---------------------------	-------------------------



SW-2, 22 OCT 2009 to 19 NOV 2009

SW-2, 22 OCT 2009 to 19 NOV 2009



CATEGORY	A	B	C	D
RNP 0.10 DA	497/40	250 (300-3/4)		NA
RNP 0.20 DA	1196-2 <sup>3</sup> / <sub>4</sub>	949 (1000-2 <sup>3</sup> / <sub>4</sub> )		NA
RNP 0.30 DA	1257-3	1010 (1000-3)		NA

**SPECIAL AIRCRAFT & AIRCREW AUTHORIZATION REQUIRED**