

# RNAV (GPS) RWY 10L

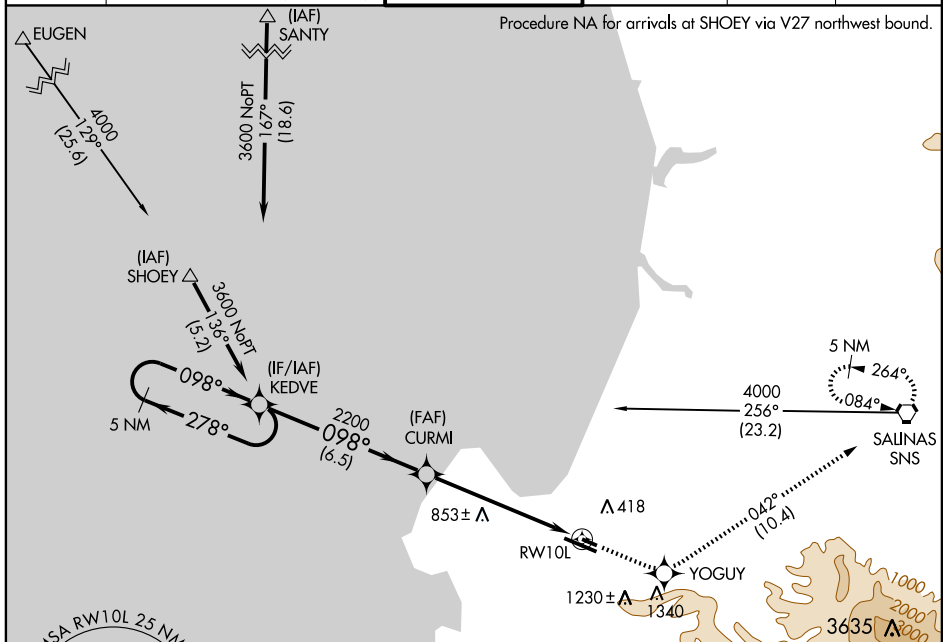
MONTEREY PENINSULA (MRY)

APP CRS	Rwy Idg	<b>3513</b>
<b>098°</b>	TDZE	<b>250</b>
	Apt Elev	<b>257</b>

**⚠** Circling NA south of Rwy 10R-28L.  
**⚠** DME/DME RNP-0.3 NA.  
 When control tower closed, straight-in minimums NA.

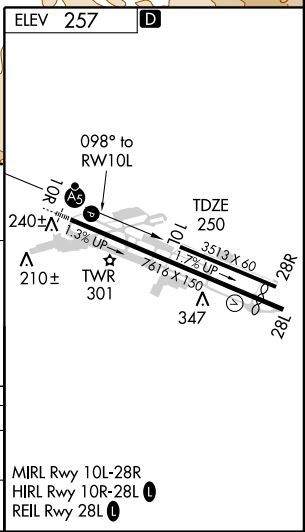
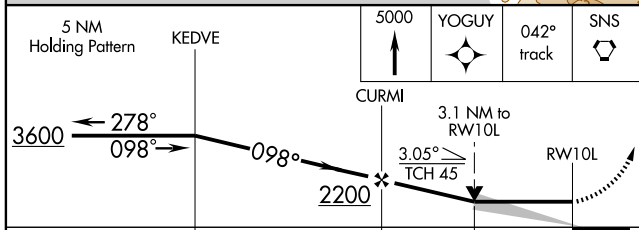
**MISSED APPROACH:** Climb to 5000 direct YOGUY and via 042° track to SNS VORTAC and hold, continue climb-in-hold to 5000.

ATIS	NORCAL APP CON	MONTEREY TOWER*	GND CON	CLNC DEL	UNICOM
<b>119.25</b>	<b>133.0 251.15 127.15 307.125</b> (360°-150°) (151°-359°)	<b>118.4 (CTAF) 0 257.8</b>	<b>121.9 348.6</b>	<b>135.45</b>	<b>122.95</b>



SW-2, 22 OCT 2009 to 19 NOV 2009

SW-2, 22 OCT 2009 to 19 NOV 2009



CATEGORY	A	B	C	D
LNVA MDA	1260-1¼ 1010 (1100-1¼)	1260-1½ 1010 (1100-1½)		NA
CIRCLING	1260-1¼ 1003 (1100-1¼)	1260-1½ 1003 (1100-1½)		NA

MIRL Rwy 10L-28R  
 HIRL Rwy 10R-28L  
 REIL Rwy 28L