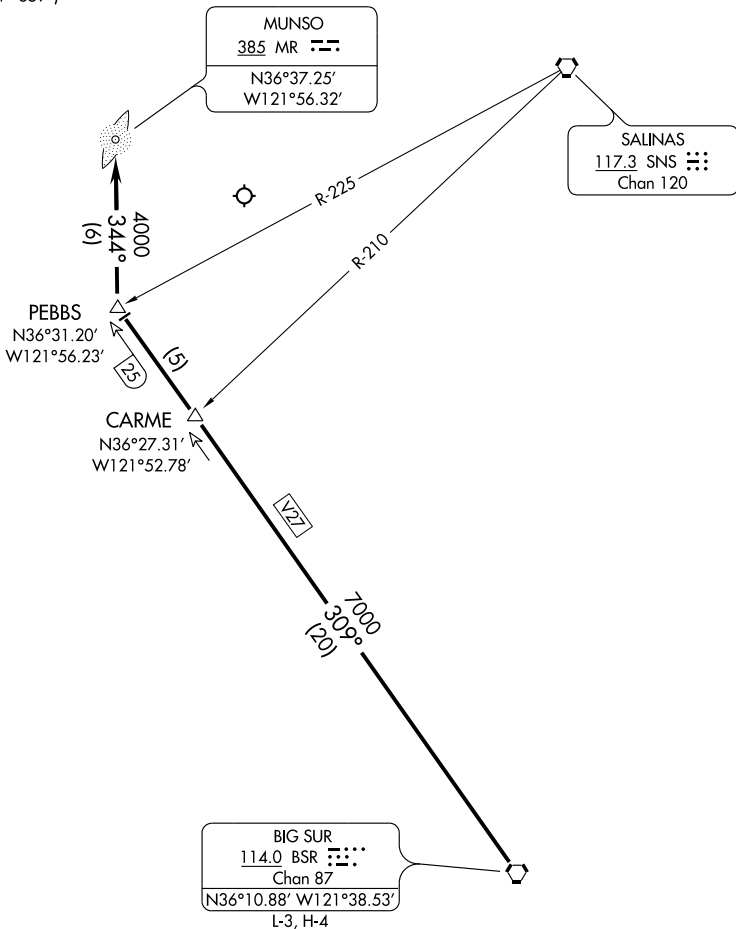


# PEBBS ONE ARRIVAL

ST-271 (FAA)

MONTEREY PENINSULA  
MONTEREY, CALIFORNIA

ATIS  
119.25  
NORCAL APP CON  
133.0 251.15 (360°-150°)  
127.15 307.125 (151°-359°)  
OAKLAND CENTER  
128.7 307.0



NOTE: ADF required

From over BSR VORTAC via BSR R-309 to PEBBS Int/DME Fix, thence via 344° course to MUNSO LOM. Expect ILS Runway 10R Approach.

# PEBBS ONE ARRIVAL

SW-2, 22 OCT 2009 to 19 NOV 2009

SW-2, 22 OCT 2009 to 19 NOV 2009