

LOC/DME RWY 28L

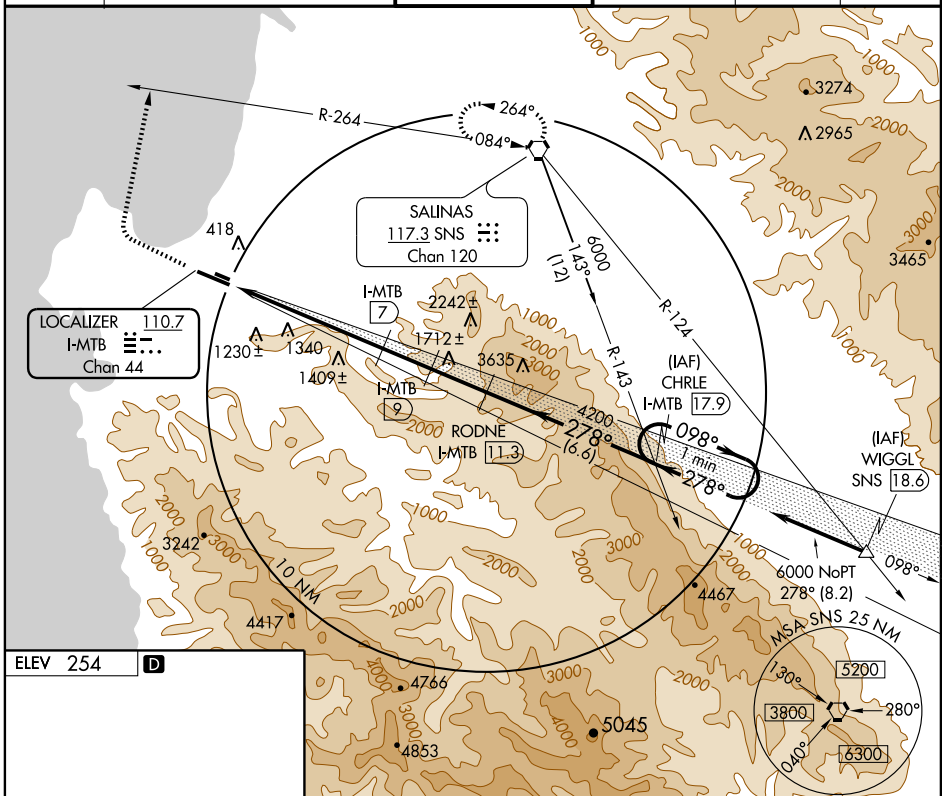
MONTEREY PENINSULA (MRY)

| | | | |
|---------------|-------------|----------|------|
| LOC/DME I-MTB | APP CRS | Rwy Idg | 6616 |
| 110.7 | 278° | TDZE | 245 |
| Chan 44 | | Apt Elev | 254 |

⚠ Circling not authorized south of Rwy 28L.
⚠ Procedure NA when control tower closed.

MISSED APPROACH: Climb straight ahead to 3000 then climbing right turn to 5000 via heading 360° and SNS R-264 to SNS VORTAC and hold.

| | | | | | |
|---------------|--|-----------------------------|--------------------|---------------|---------------|
| ATIS | NORCAL APP CON | MONTEREY TOWER * | GND CON | CLNC DEL | UNICOM |
| 119.25 | 133.0 251.15 (360°-150°) 127.15 307.125 (151°-359°) | 118.4 (CTAF) 0 257.8 | 121.9 348.6 | 135.45 | 122.95 |

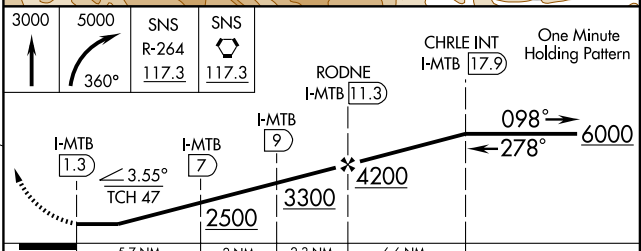


SW-2, 22 OCT 2009 to 19 NOV 2009

SW-2, 22 OCT 2009 to 19 NOV 2009

ELEV 254 **D**

MIRL Rwy 10L-28R
 HIRL Rwy 10R-28L
 REIL Rwy 28L



| CATEGORY | A | B | C | D |
|----------|---------------------------|---------------------------|--------|---------------|
| S-28L | 1660-1¼ 1415 (1500-1¼) | 1660-1½ 1415 (1500-1½) | 1660-3 | 1415 (1500-3) |
| CIRCLING | 1660-1¼ 1406 (1500-1¼) | 1660-1½ 1406 (1500-1½) | 1660-3 | 1406 (1500-3) |