

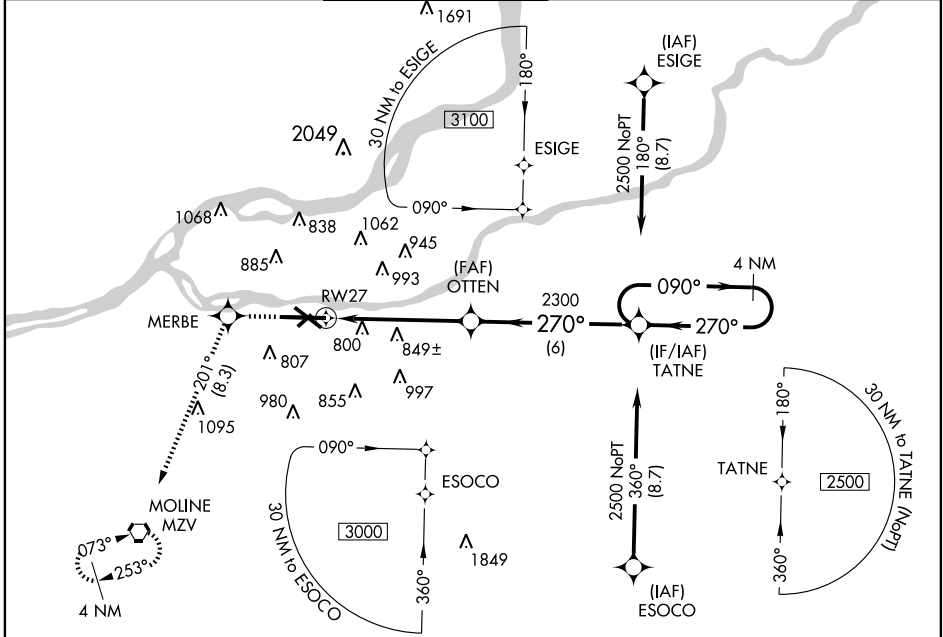
RNAV (GPS) Z RWY 27

MOLINE / QUAD CITY INTL (MLI)

APP CRS	Rwy Idg	10002
270°	TDZE	581
	Apt Elev	590

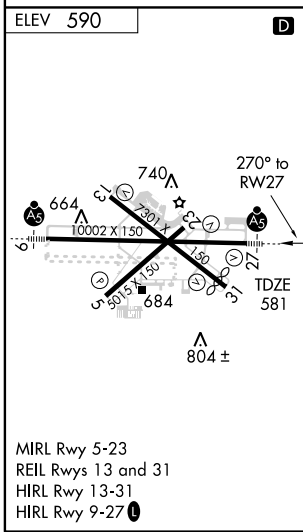
▽ NA	Baro-VNAV NA below -16°C (4°F) GPS or RNP-0.3 Required. DME/DME RNP-0.3 NA.	MALSR 	MISSED APPROACH: Climb to 3000 direct MERBE WP and via 201° track to MZV VORTAC and hold.
-------------	---	------------------	--

ATIS 121.2	QUAD CITY APP CON * 125.95 257.8	QUAD CITY TOWER * 119.4 (CTAF) 257.8	GND CON 121.9 257.8	CLNC DEL 124.05	UNICOM 122.95
----------------------	--	--	-------------------------------	---------------------------	-------------------------



EC-3, 22 OCT 2009 to 19 NOV 2009

EC-3, 22 OCT 2009 to 19 NOV 2009



3000	MERBE	TRK 201°	MZV	
*LNAV only				
	RW27	OTTEN	TATNE	
	1.5	3.7 NM	6 NM	
CATEGORY	A	B	C	D
GLS PA DA	NA			
LNAV/VNAV DA	1120-1½ 539 (600-1½)			
LNAV MDA	1100/24 519 (600-½)	1100/50 519 (600-1)	1100/60 519 (600-1¼)	
CIRCLING	1140-2 550 (600-2)		1260-2 670 (700-2)	