

RNAV (GPS) RWY 13

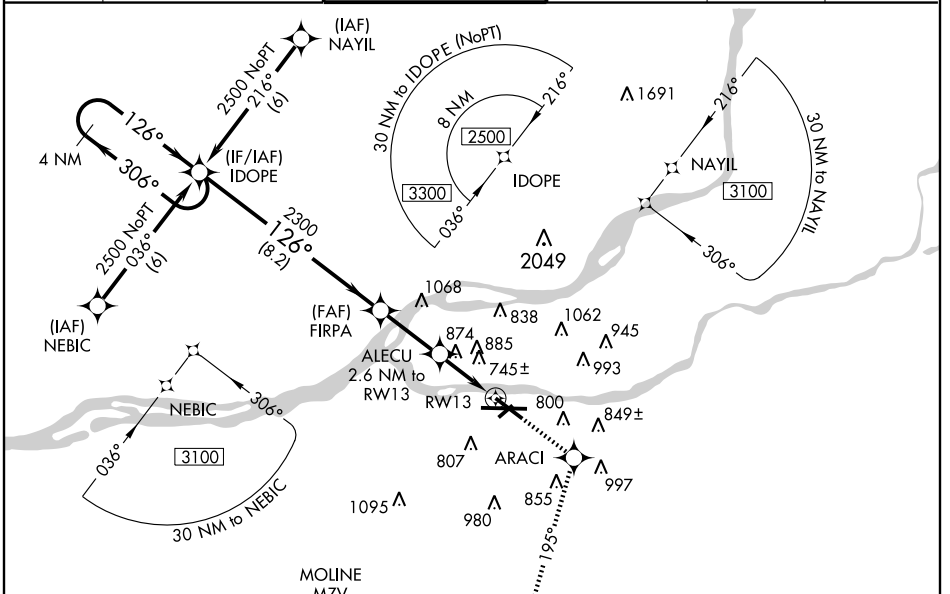
MOLINE / QUAD CITY INTL (MLI)

WAAS CH 42515 W13A	APP CRS 126°	Rwy Idg TDZE Apt Elev	7046 590 590
--	------------------------	-----------------------------	---

▼ Straight-in minimums NA at night. Baro-VNAV NA when using Davenport altimeter setting. For uncompensated Baro-VNAV systems, LNAV/VNAV NA below -16°C (4°F) or above 47°C (116°F). DME/DME RNP-0.3 NA. Visibility reduction by helicopters NA. **▲** When local altimeter setting not received, use Davenport altimeter setting and increase all DA 47 feet and all MDA 60 feet increase LPV all Cats, LNAV/VNAV all Cats, LNAV Cats C and D, and Circling Cats C and D visibility ¼ mile.

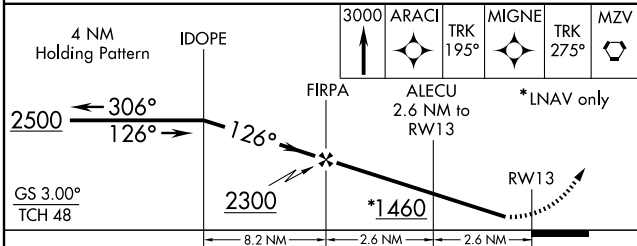
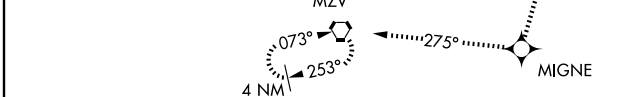
MISSED APPROACH: Climb to 3000 direct ARACI and via track 195° to MIGNE and via track 275° to MZV VORTAC and hold.

ATIS 121.2	QUAD CITY APP CON * 125.95 257.8	QUAD CITY TOWER * 119.4 (CTAF) 0 257.8	GND CON 121.9 257.8	CLNC DEL 124.05	UNICOM 122.95
----------------------	--	--	-------------------------------	---------------------------	-------------------------

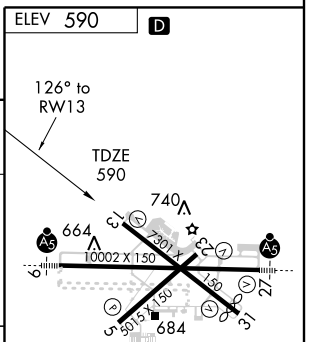


EC-3, 22 OCT 2009 to 19 NOV 2009

EC-3, 22 OCT 2009 to 19 NOV 2009



CATEGORY	A	B	C	D
LPV DA		908-1	318 (400-1)	
LNAV/VNAV DA		1292-2½	702 (800-2½)	
LNAV MDA	1140-1	550 (600-1)	1140-1½ 550 (600-1½)	1140-1¾ 550 (600-1¾)
CIRCLING	1140-1	550 (600-1)	1140-1½ 550 (600-1½)	1260-2 670 (700-2)



MIRL Rwy 5-23
REIL Rwy 13 and 31
HIRL Rwy 9-27 and 13-31