

MOLINE, ILLINOIS

AL-269 (FAA)

# ILS or LOC RWY 9

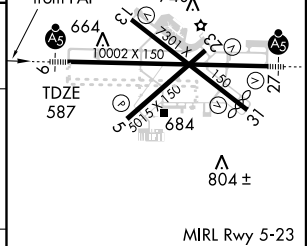
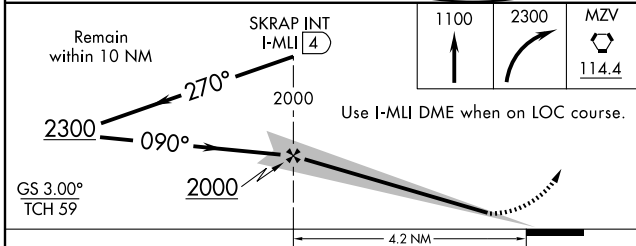
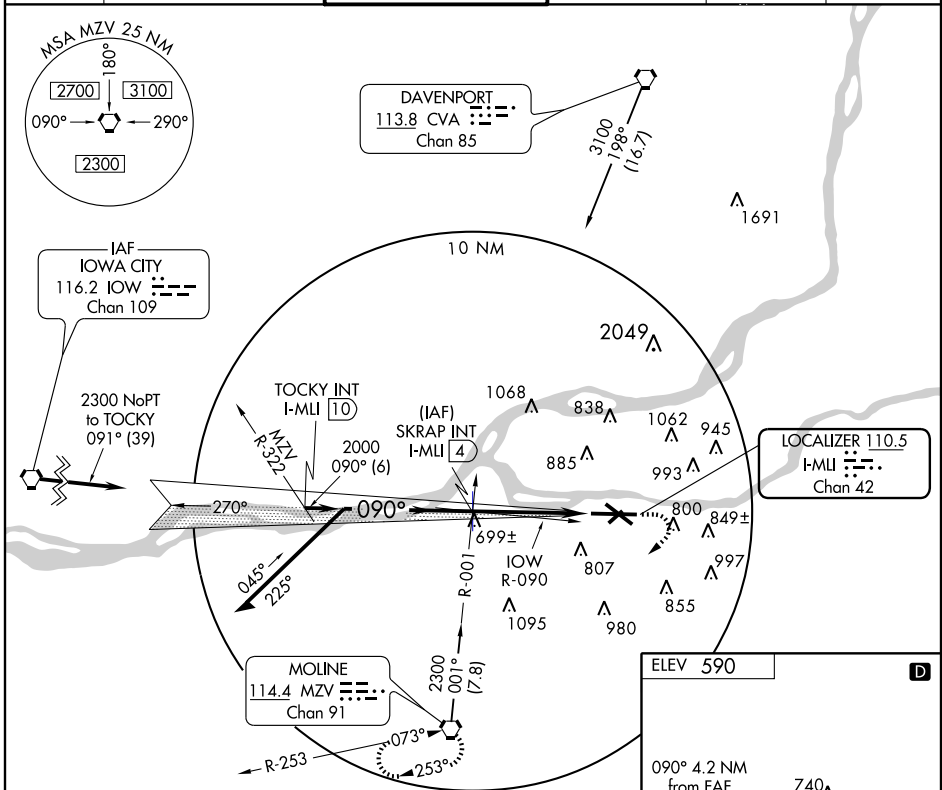
MOLINE / QUAD CITY INTL (MLI)

LOC/DME I-MLI <b>110.5</b> Chan <b>42</b>	APP CRS <b>090°</b>	Rwy Idg <b>10002</b> TDZE <b>587</b> Apt Elev <b>590</b>
---	------------------------	--

**▽** \*RVR 1800 authorized with the use of FD or AP or HUD to DA.  
**▲** MALSR

MISSED APPROACH: Climb to 1100, then climbing right turn to 2300 direct MZV VORTAC and hold.

ATIS <b>121.2</b>	QUAD CITY APP CON * <b>125.95 257.8</b>	QUAD CITY TOWER * <b>119.4 (CTAF) 0 257.8</b>	GND CON <b>121.9 257.8</b>	CLNC DEL <b>124.05</b>	UNICOM <b>122.95</b>
----------------------	--	--	-------------------------------	---------------------------	-------------------------



CATEGORY	A	B	C	D
S-ILS 9	* 787/24 200 (200-1/2)			
S-LOC 9	940/24 353 (400-1/2)		940/40 353 (400-3/4)	
CIRCLING	1140-1 550 (600-1)		1140-1 1/2 550 (600-1 1/2)	1260-2 670 (700-2)

MIRL Rwy 5-23 REIL Rwys 13 and 31 HIRL Rwy 13-31 HIRL Rwy 9-27					
FAF to MAP 4.2 NM					
Knots	60	90	120	150	180
Min:Sec	4:12	2:48	2:06	1:41	1:24

MOLINE, ILLINOIS  
Amdt 30A 09239

41°27'N - 90°30'W

# MOLINE / QUAD CITY INTL (MLI) ILS or LOC RWY 9

EC-3, 22 OCT 2009 to 19 NOV 2009

EC-3, 22 OCT 2009 to 19 NOV 2009