

WAAS CH 70304 W32A	APP CRS 320°	Rwy Idg TDZE Apt Elev	9618 25 26
--	------------------------	-----------------------------	---------------------------------------

RNAV (GPS) RWY 32

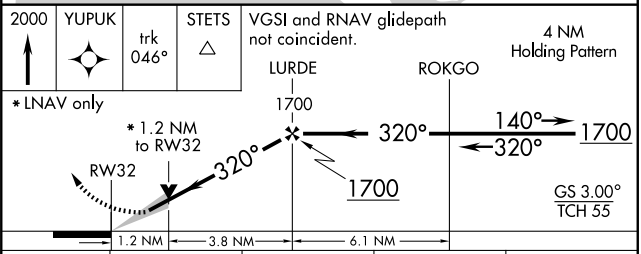
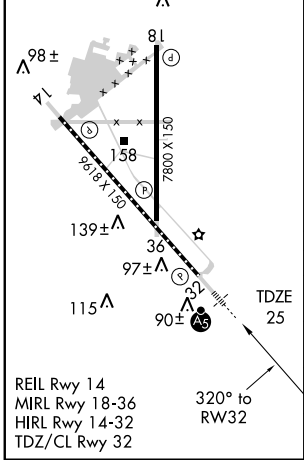
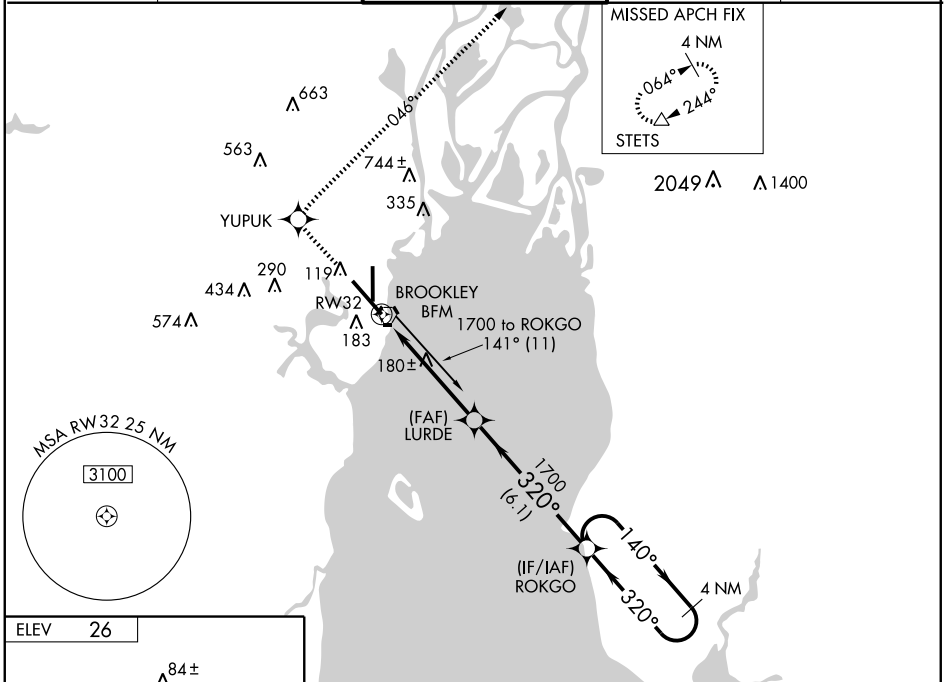
MOBILE DOWNTOWN (BFM)

▼ For uncompensated Baro-VNAV systems, LNAV/VNAV NA below -15°C (5°F) or above 48°C (118°F). DME/DME RNP-0.3 NA. When local altimeter setting not received, use Mobile Rgnl altimeter setting and increase all DA 50 feet and all MDA 60 feet, increase LNAV Cat C visibility to RVR 5000, Cat D to RVR 6000. Baro-VNAV and VDP NA when using Mobile Rgnl altimeter setting.



MISSED APPROACH: Climb to 2000 direct YUPEUK and via track 046° to STETS and hold.

ATIS 135.575	MOBILE APP CON * 118.5 269.3	DOWNTOWN TOWER * 118.8 (CTAF) 251.1	GND CON 121.7 239.3	UNICOM 122.95
------------------------	--	---	-------------------------------	-------------------------



CATEGORY	A	B	C	D
LPV DA		225/24	200 (200-½)	
LNAV/VNAV DA		368/40	343 (400-¾)	
LNAV MDA	480/24	455 (500-½)	480/40 455 (500-¾)	480/50 455 (500-1)
CIRCLING	520-1	494 (500-1)	520-1½ 494 (500-1½)	580-2 554 (600-2)

SE-4, 22 OCT 2009 to 19 NOV 2009

SE-4, 22 OCT 2009 to 19 NOV 2009