

WAAS CH 50411 W14A	APP CRS 140°	Rwy ldg 9618 TDZE 26 Apt Elev 26
--	------------------------	---

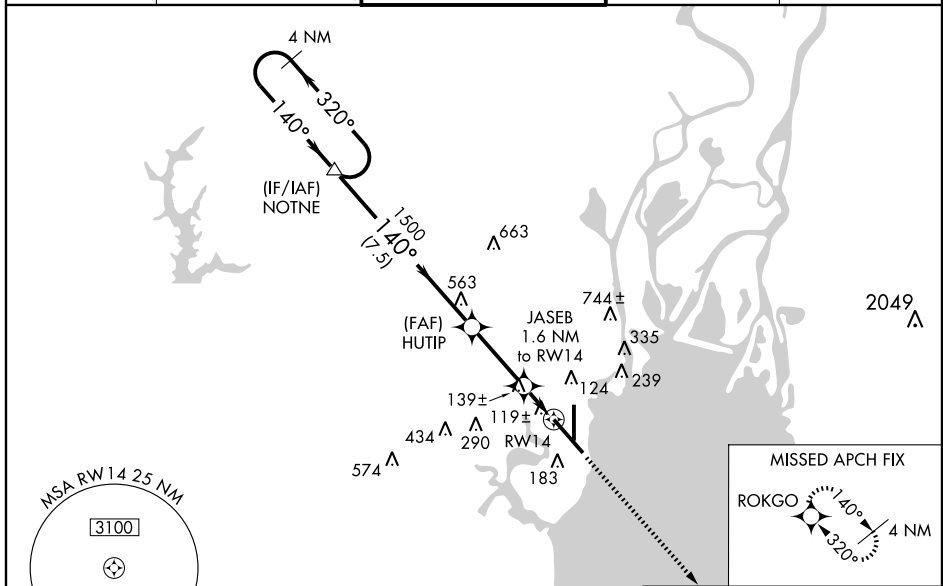
RNAV (GPS) RWY 14

MOBILE DOWNTOWN (BFM)

⚠ For uncompensated Baro-VNAV systems, LNAV/VNAV NA below -15°C (5°F) or above 48°C (118°F). DME/DME RNP-0.3 NA. Visibility reduction by helicopters NA. Baro-VNAV and VDP NA when using Mobile Rgnl altimeter setting. When local altimeter setting not received, use Mobile Rgnl altimeter setting and increase all DA 50 feet and all MDA 60 feet, increase LPV all Cats., LNAV/VNAV all Cats., LNAV Cats. C and D and Circling Cats. C and D visibility ¼ mile.

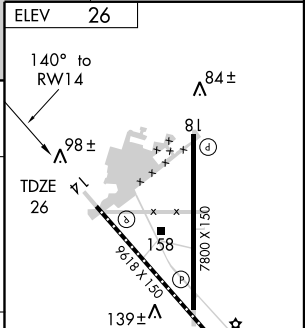
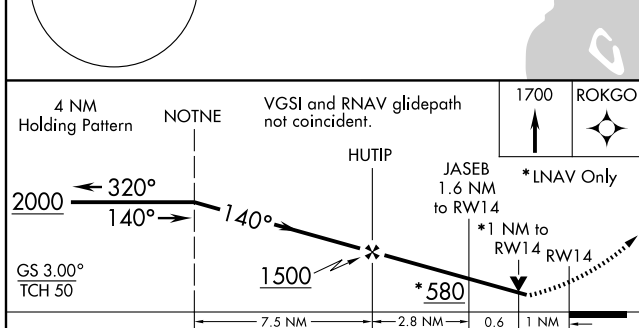
MISSED APPROACH: Climb to 1700 direct ROKGO and hold.

ATIS 135.575	MOBILE APP CON * 118.5 269.3	DOWNTOWN TOWER * 118.8 (CTAF) 0 251.1	GND CON 121.7 239.3	UNICOM 122.95
------------------------	--	---	-------------------------------	-------------------------



SE-4, 22 OCT 2009 to 19 NOV 2009

SE-4, 22 OCT 2009 to 19 NOV 2009



CATEGORY	A	B	C	D
LPV DA		343-1	317 (400-1)	
LNAV/VNAV DA		396-1¼	370 (400-1¼)	
LNAV MDA		400-1	374 (400-1)	400-1¼ 374 (400-1¼)
CIRCLING	680-1	654 (700-1)	680-1¾ 654 (700-1¾)	680-2 654 (700-2)

ELEV 26
140° to RWY14
1700 ROKGO
TDZE 26
REIL Rwy 14
MIRL Rwy 18-36
HIRL Rwy 14-32
TDZ/CL Rwy 32