

LOC/DME I-RUJ 108.5 Chan 22	APP CRS 320°	Rwy Idg 9618 TDZE 25 Apt Elev 26
--	------------------------	---

ILS or LOC RWY 32

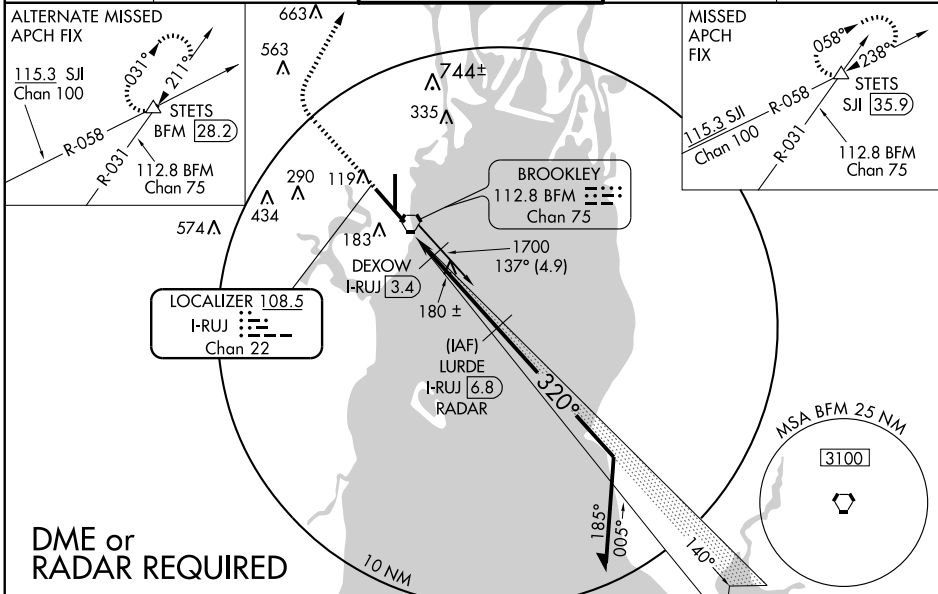
MOBILE DOWNTOWN (BFM)

▼ DME or Radar Required. When local altimeter setting not received, use Mobile Rgnl altimeter setting and increase all DA 50 feet and all MDA 60 feet. For inoperative MALSRL, increase ILS all Cats visibility to RVR 4000, DEXOW fix minimums LOC Cat D to RVR 5000. For inoperative MALSRL when using Mobile Rgnl altimeter setting increase ILS all Cats visibility to RVR 4000.

MALSRL
AS

MISSED APPROACH: Climb to 600 then climbing right turn to 2000 via heading 030° and SJL R-058 to STETS INT/SJL 35.9 DME and hold.

ATIS 135.575	MOBILE APP CON ★ 118.5 269.3	DOWNTOWN TOWER ★ 118.8 (CTAF) 251.1	GND CON 121.7 239.3	UNICOM 122.95
------------------------	--	---	-------------------------------	-------------------------



SE-4, 22 OCT 2009 to 19 NOV 2009

SE-4, 22 OCT 2009 to 19 NOV 2009

ELEV 26	600	2000	SJL R-058	STETS	LURDE I-RUJ [6.8] RADAR	* LOC Only 640 when using Mobile Rgnl altimeter setting.
84±	hdg 030°					Remain within 10 NM
98±						
158						
139±						
97±						
115						
90±						
REIL Rwy 14						
MIRL Rwy 18-36						
HIRL Rwy 14-32						
TDZ/CL Rwy 32						
320° 5 NM from FAF						
FAF to MAP 5 NM						
Knots	60	90	120	150	180	
Min:Sec	5:00	3:20	2:30	2:00	1:40	
CATEGORY	A	B	C	D		
S-ILS 32		225/18	200 (200-1/2)			
S-LOC 32	580/24	555 (600-1/2)	580/50 555 (600-1)	580/60 555 (600-1/4)		
CIRCLING	580-1	554 (600-1)	580-1/2 554 (600-1/2)	580-2 554 (600-2)		
DEXOW FIX MINIMUMS						
S-LOC 32	360/24	335 (400-1/2)		360/40 335 (400-3/4)		
CIRCLING	520-1	494 (500-1)	520-1/2 494 (500-1/2)	580-2 554 (600-2)		