

# VOR or TACAN-A

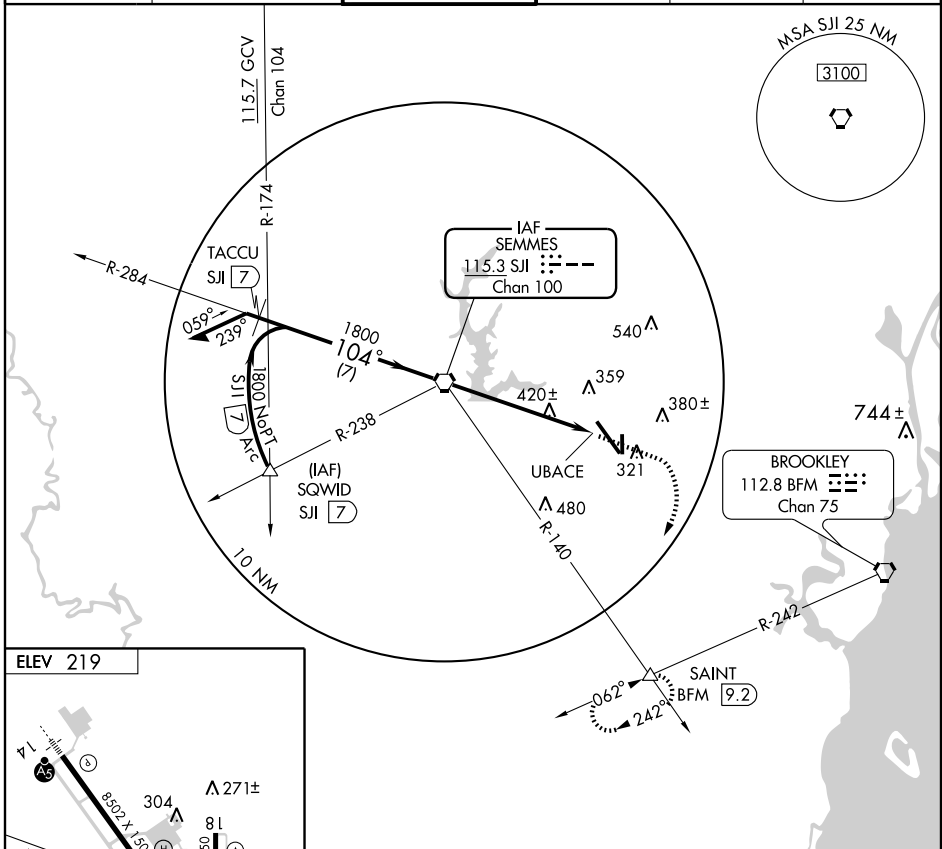
MOBILE RGNL (MOB)

VORTAC SJI <b>115.3</b> Chan 100	APP CRS <b>104°</b>	Rwy Idg TDZE Apt Elev <b>N/A</b> <b>N/A</b> <b>219</b>
--	------------------------	---

**ASR** Circling to Rwy 18 NA at night.

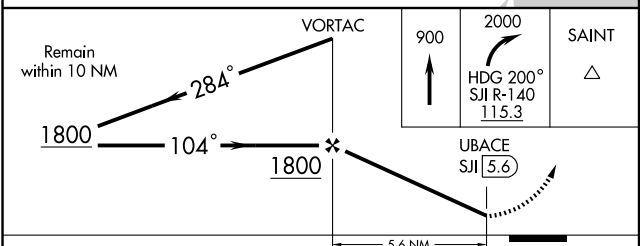
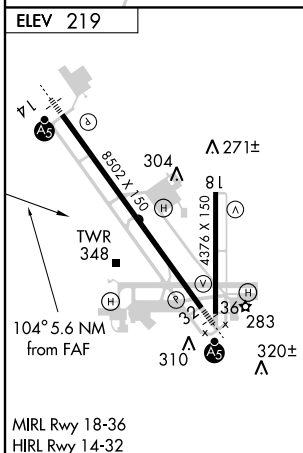
MISSED APPROACH: Climb to 900, then climbing right turn to 2000 via heading 200° and SJI R-140 to SAINT Int/BFM 9.2 DME and hold.

ATIS <b>124.75 257.85</b>	MOBILE APP CON ★ <b>118.5 269.3</b>	MOBILE TOWER ★ <b>118.3 (CTAF) 239.0</b>	GND CON <b>121.9 348.6</b>	CLNC DEL <b>119.85</b>	UNICOM <b>122.95</b>
------------------------------	--	---	-------------------------------	---------------------------	-------------------------



SE-4, 22 OCT 2009 to 19 NOV 2009

SE-4, 22 OCT 2009 to 19 NOV 2009



FAF to MAP 5.6 NM						
Knots	60	90	120	150	180	
Min:Sec	5:36	3:44	2:48	2:14	1:52	
CATEGORY	A		B		C	D
CIRCLING	680-1		461 (500-1)		680-1½ 461 (500-1½)	780-2 561 (600-2)