

RNAV (GPS) RWY 36

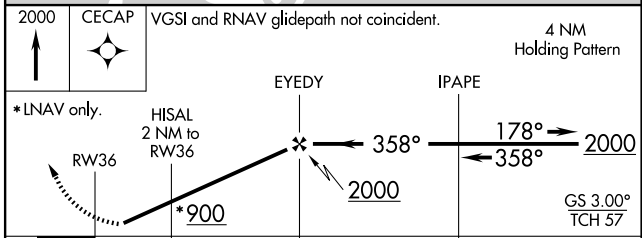
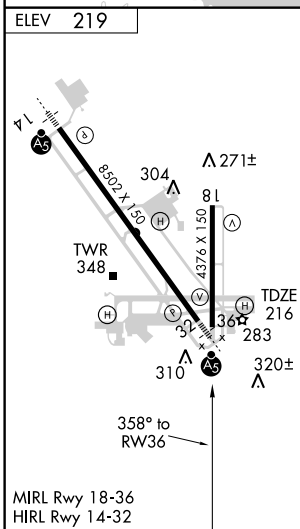
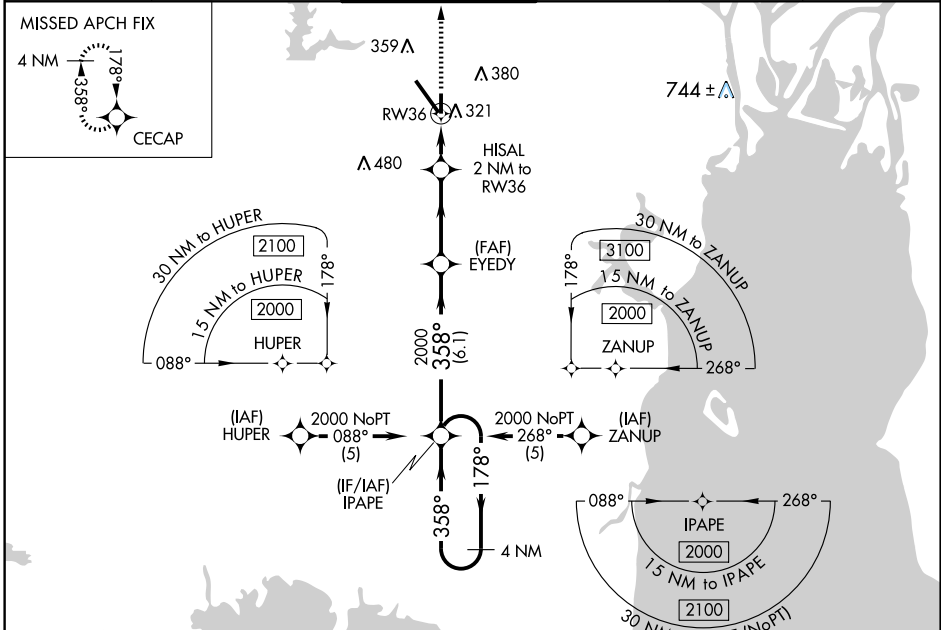
MOBILE RGNL (MOB)

WAAS CH 50215 W36A	APP CRS 358°	Rwy Idg TDZE 216 Apt Elev 219	4376
--	------------------------	---	-------------

ASR Circling to Rwy 18 NA at night. For uncompensated Baro-VNAV systems, LNAV/VNAV NA below -1.5°C (5°F) or above 48°C (118°F). DME/DME RNP-0.3 NA. Visibility reduction by helicopters NA.

MISSED APPROACH: Climb to 2000 direct CECAP and hold.

ATIS 124.75 257.85	MOBILE APP CON ★ 118.5 269.3	MOBILE TOWER ★ 118.3 (CTAF) 0 239.0	GND CON 121.9 348.6	CLNC DEL 119.85	UNICOM 122.95
------------------------------	--	---	-------------------------------	---------------------------	-------------------------



CATEGORY	A	B	C	D
LPV DA		515-1	299 (300-1)	
LNAV/VNAV DA		571-1¼	355 (400-1¼)	
LNAV MDA	600-1	384 (400-1)		600-1¼ 384 (400-1¼)
CIRCLING	680-1	461 (500-1)	680-1½ 461 (500-1½)	780-2 561 (600-2)

SE-4, 22 OCT 2009 to 19 NOV 2009

SE-4, 22 OCT 2009 to 19 NOV 2009