

RNAV (GPS) RWY 32

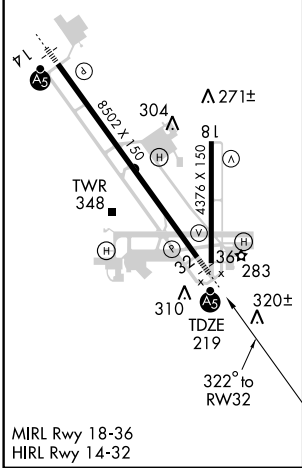
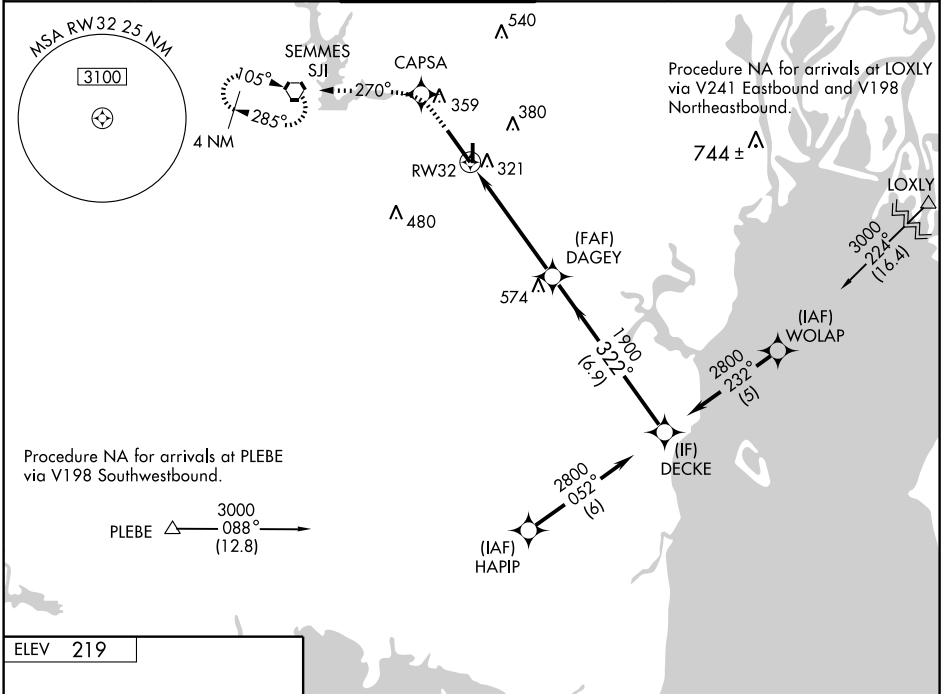
MOBILE RGNL (MOB)

WAAS CH 69306 W32A	APP CRS 322°	Rwy Idg TDZE Apt Elev	8502 219 219
--	------------------------	-----------------------------	---

⚠ DME/DME RNP-0.3 NA. Circling Rwy 18 NA at night. For inoperative MALSRS, increase LPV all Cats. visibility to 1 and LNAV Cat. D visibility to 1 1/2. For uncompensated Baro-VNAV systems, LNAV/VNAV NA below -15°C (5°F) or above 48°C (118°F).

MALSRS
 MISSED APPROACH: Climb to 2000 direct CAPSA and via 270° track to SJJ VORTAC and hold.

ATIS 124.75 257.85	MOBILE APP CON * 118.5 269.3	MOBILE TOWER * 118.3 (CTAF) 0 239.0	GND CON 121.9 348.6	CLNC DEL 119.85	UNICOM 122.95
------------------------------	--	---	-------------------------------	---------------------------	-------------------------



2000	CAPSA	SJJ	VGSI and RNAV glidepath not coincident.	DECKE
\uparrow	\star	\triangle		
*LNAV only.	*1 NM to RWY32			
	RW32	DAGEY	322°	2800
	1 NM	4 NM	6.9 NM	Procedure Turn NA GS 3.00° TCH 58

CATEGORY	A	B	C	D
LPV DA		510/24	291 (300-1/2)	
LNAV/VNAV DA		586/40	367 (400-3/4)	
LNAV MDA		580/24	361 (400-1/2)	
CIRCLING	680-1	461 (500-1)	680-1 1/2 461 (500-1 1/2)	780-2 561 (600-2)

SE-4, 22 OCT 2009 to 19 NOV 2009

SE-4, 22 OCT 2009 to 19 NOV 2009