

RNAV (GPS) RWY 18

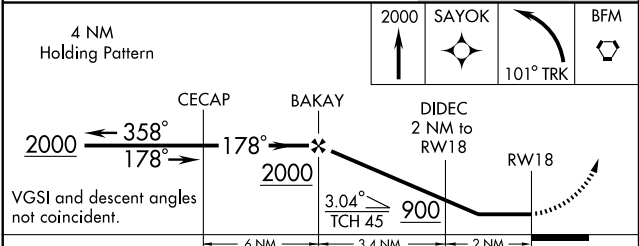
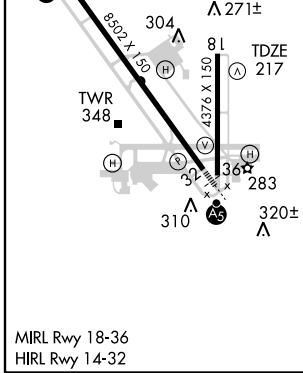
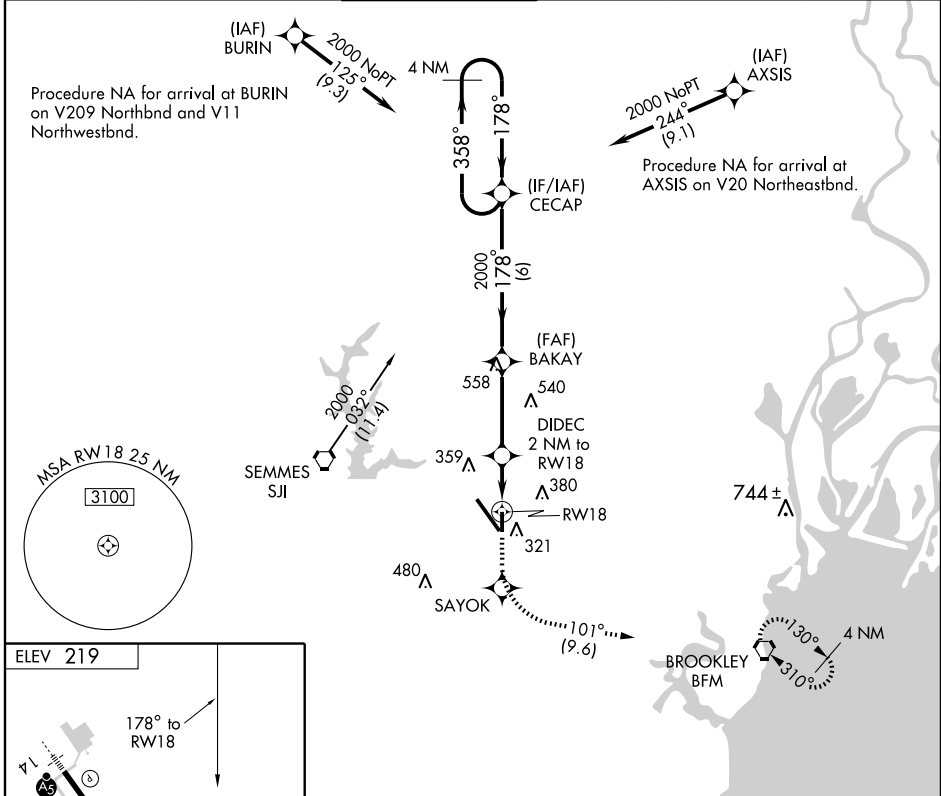
MOBILE RGNL (MOB)

APP CRS	Rwy Idg	4376
178°	TDZE	217
	Apt Elev	219

NA GPS or RNP-0.3 Required. DME/DME RNP-0.3 NA. When VGSI inop, straight-in/circling Rwy 18 NA at night.

ASR MISSED APPROACH: Climb to 2000 direct SAYOK WP and left turn via 101° track to BFM VORTAC and hold.

ATIS	MOBILE APP CON ★	MOBILE TOWER ★	GND CON	CLNC DEL	UNICOM
124.75 257.85	118.5 269.3	118.3 (CTAF) 239.0	121.9 348.6	119.85	122.95



CATEGORY	A	B	C	D
LNAV MDA	640-1	423 (500-1)	640-1¼	423 (500-1¼)
CIRCLING	680-1	461 (500-1)	680-1½	780-2 461 (500-1½) 561 (600-2)

SE-4, 22 OCT 2009 to 19 NOV 2009

SE-4, 22 OCT 2009 to 19 NOV 2009