

MOBILE, ALABAMA

AL-267 (FAA)

WAAS CH 97506 W14A	APP CRS 142°	Rwy Idg TDZE 215 Apt Elev 219	8502
--	------------------------	---	-------------

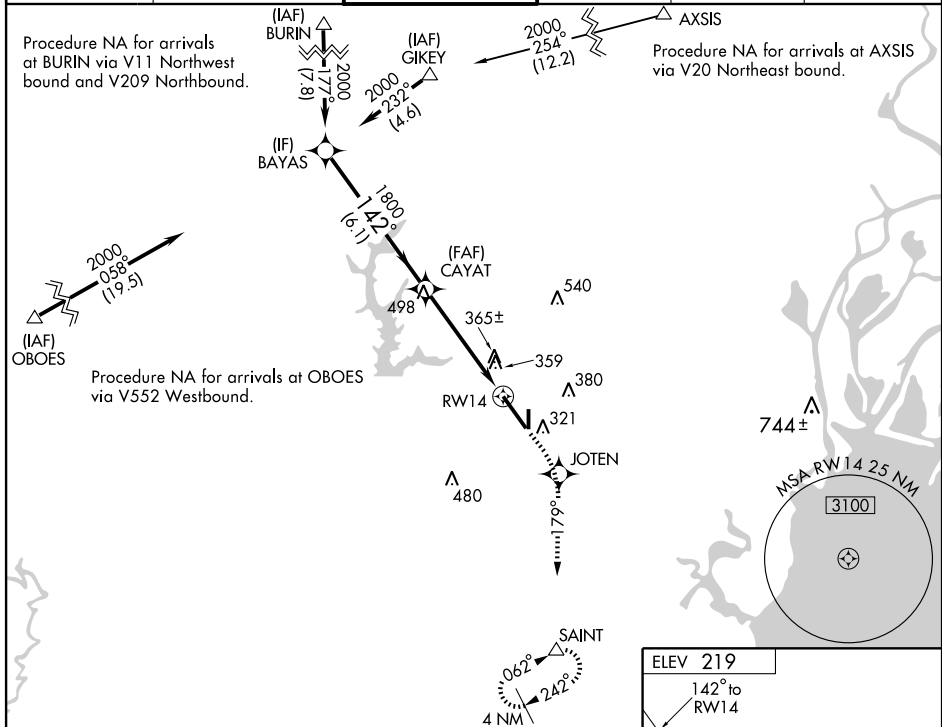
RNAV (GPS) RWY 14

MOBILE RGNL (MOB)

▼ For inoperative MALSR, increase LNAV Cat. D visibility to RVR 6000.
 For uncompensated Baro-VNAV systems, procedure NA below -1.5°C (5°F)
 ASR or above 48°C (118°F). DME/DME RNP-0.3 NA.

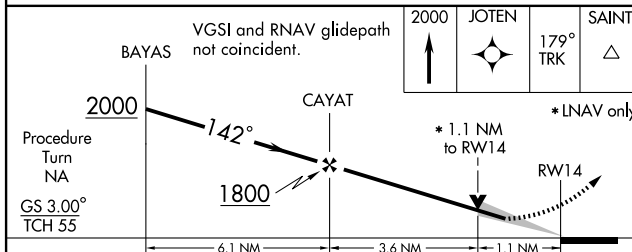
MALSR **MISSED APPROACH:** Climb to 2000 direct JOTEN and via 179° track to SAINT and hold.

ATIS 124.75 257.85	MOBILE APP CON ★ 118.5 269.3	MOBILE TOWER ★ 118.3 (CTAF) 239.0	GND CON 121.9 348.6	CLNC DEL 119.85	UNICOM 122.95
------------------------------	--	---	-------------------------------	---------------------------	-------------------------

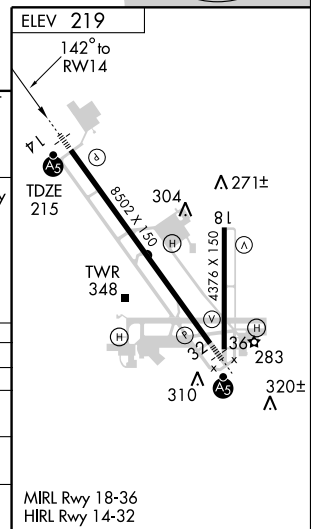


SE-4, 22 OCT 2009 to 19 NOV 2009

SE-4, 22 OCT 2009 to 19 NOV 2009



CATEGORY	A	B	C	D
LPV DA	465/24		250 (300-1/2)	
LNAV/VNAV DA	650/50		435 (500-1)	
LNAV MDA	620/24	405 (500-1/2)	620/40 405 (500-3/4)	620/50 405 (500-1)
CIRCLING	680-1	461 (500-1)	680-1 1/2 461 (500-1 1/2)	780-2 561 (600-2)



MOBILE, ALABAMA
Amdt 1 09015

30°41'N-88°15'W

RNAV (GPS) RWY 14

MOBILE RGNL (MOB)