


MZULA ONE DEPARTURE

SL-266 (FAA)

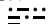
MISSOULA INTL (MSO)
MISSOULA, MONTANA

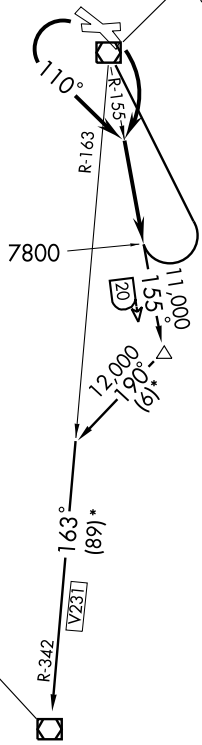
ATIS 126.65
GND CON
121.9
MISSOULA TOWER*
118.4 (CTAF) 377.175
SPOKANE DEP CON
124.9 298.95
SALT LAKE CITY CENTER
133.4 285.4

MISSOULA
112.8 MSO 
Chan 75
N46°54.48'-W114°05.02'

L-13
10,000

VICTO
N46°34.68'
W114°00.98'
11,000

SALMON
113.5 LKT 
Chan 82
N45°01.28'-W114°05.05'
L-13, H-1



*Approx dist

NOTE: This SID requires a minimum climb of 400' per NM to 11,000'.

NOTE: DME required.

NOTE: Chart not to scale.

NW-1, 22 OCT 2009 to 19 NOV 2009

NW-1, 22 OCT 2009 to 19 NOV 2009

DEPARTURE ROUTE DESCRIPTION

TAKE-OFF RUNWAY 7: Not authorized.

TAKE-OFF RUNWAY 11: Climbing right turn to intercept MSO R-155, thence....

TAKE-OFF RUNWAY 25 OR 29: Climbing left turn heading 110° to intercept MSO R-155, thence....

....climb to 7800' via MSO R-155; thence climb via (transition).

MISSOULA TRANSITION (MZULA1.MSO): After leaving 7800', make a climbing left turn direct to MSO VOR/DME.

SALMON TRANSITION (MZULA1.LKT): After reaching 7800' continue on MSO R-155 until VICTO INT. Then via 190° heading and V231 to LKT VOR/DME.

MZULA ONE DEPARTURE