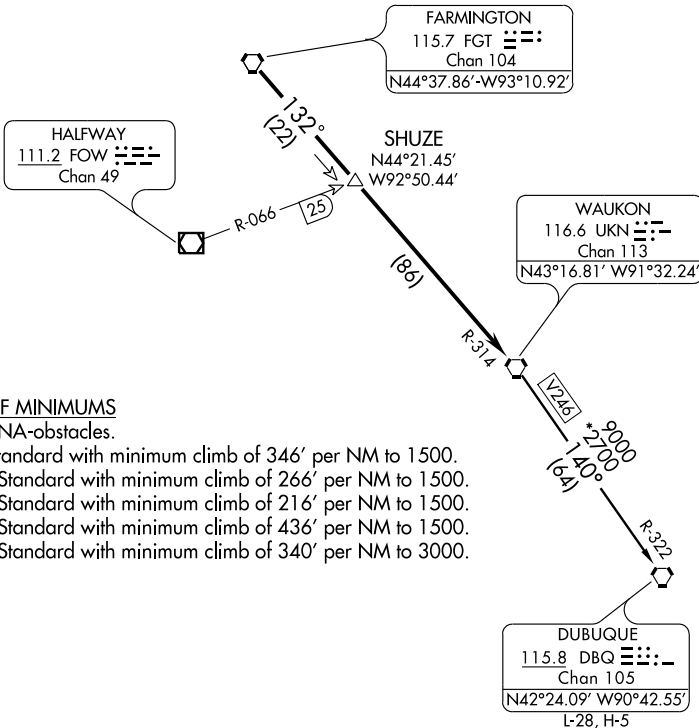
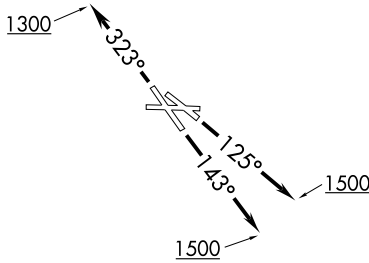


WAUKON TWO DEPARTURE

ST. PAUL DOWNTOWN HOLMAN FIELD (STP)
SL-263 (FAA) ST. PAUL, MINNESOTA

ATIS 118.35
CLNC DEL
121.675
MINNEAPOLIS DEP CON
121.2 357.4



TAKE-OFF MINIMUMS

- Rwy 31: NA-obstacles.
- Rwy 9: Standard with minimum climb of 346' per NM to 1500.
- Rwy 13: Standard with minimum climb of 266' per NM to 1500.
- Rwy 14: Standard with minimum climb of 216' per NM to 1500.
- Rwy 27: Standard with minimum climb of 436' per NM to 1500.
- Rwy 32: Standard with minimum climb of 340' per NM to 3000.

NOTE: RADAR required.

NOTE: Chart not to scale.

(NARRATIVE ON FOLLOWING PAGE)