

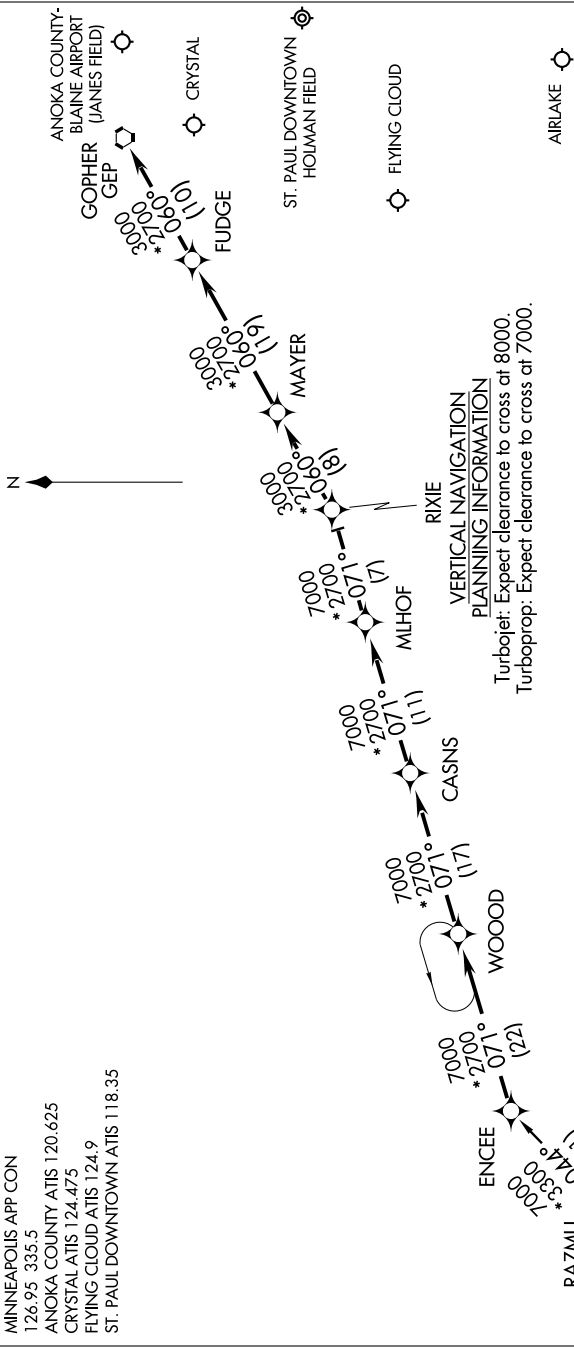
ENCEE ONE ARRIVAL (RNAV)

ST-263 (FAA)

MINNEAPOLIS-ST. PAUL, MINNESOTA

6000 11 NOV 2009 to 19 NOV 2009

MINNEAPOLIS APP CON
 126.95 335.5
 ANOKA COUNTY ATIS 120.625
 CRYSTAL ATIS 124.475
 FLYING CLOUD ATIS 124.9
 ST. PAUL DOWNTOWN ATIS 118.35



**VERTICAL NAVIGATION
 PLANNING INFORMATION**
 Turbojet: Expect clearance to cross at 8000.
 Turboprop: Expect clearance to cross at 7000.

NOTE: 1. GPS required.
 2. RNAV 1

NOTE: Chart not to scale.

SIUX FALLS TRANSITION (FSD.ENCEE1)

From over ENCEE WP via 071° track to RIXIE WP, thence via 060° track to GEP VORTAC, thence expect radar vectors to final approach course.

ENCEE ONE ARRIVAL (RNAV)

MINNEAPOLIS-ST. PAUL, MINNESOTA

NC-1, 22 OCT 2009 to 19 NOV 2009