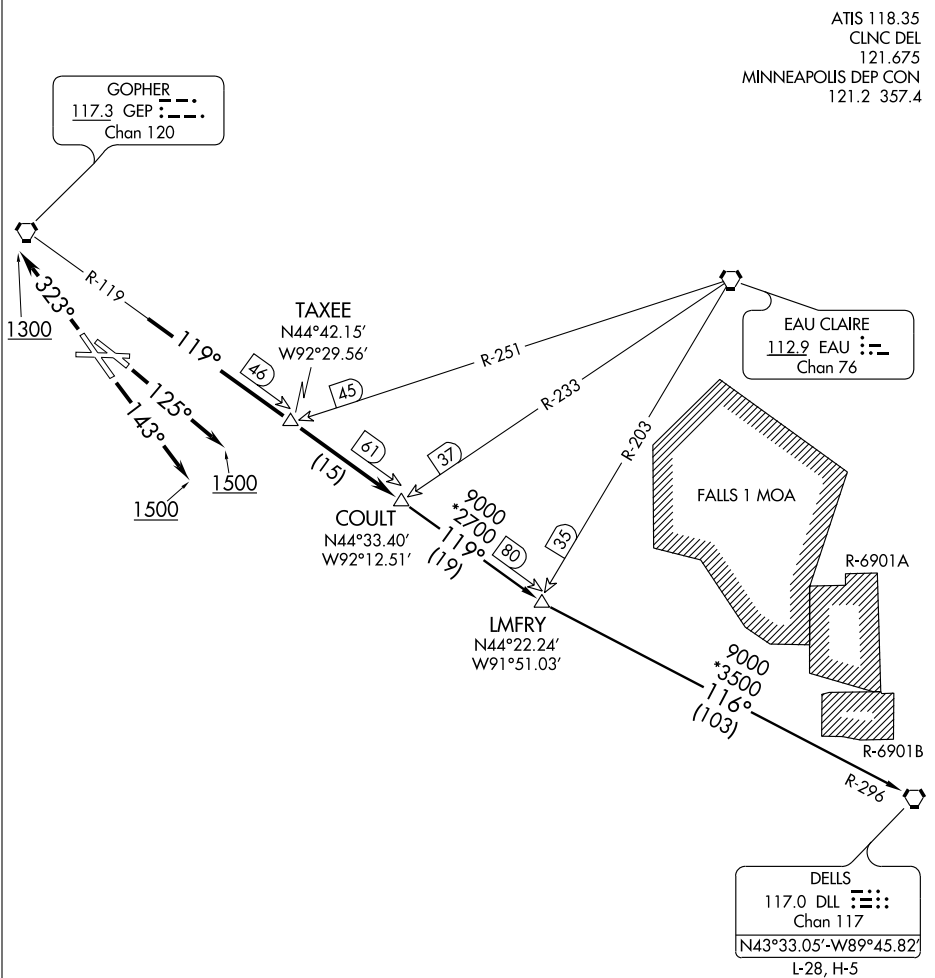


# COULT TWO DEPARTURE

ATIS 118.35  
CLNC DEL 121.675  
MINNEAPOLIS DEP CON 121.2 357.4

NC-1, 22 OCT 2009 to 19 NOV 2009

NC-1, 22 OCT 2009 to 19 NOV 2009



### TAKE-OFF MINIMUMS

- Rwy 31: NA-obstacles.
- Rwy 9: Standard with minimum climb of 346' per NM to 1500.
- Rwy 13: Standard with minimum climb of 266' per NM to 1500.
- Rwy 14: Standard with minimum climb of 216' per NM to 1500.
- Rwy 27: Standard with minimum climb of 436' per NM to 1500.
- Rwy 32: Standard with minimum climb of 340' per NM to 3000.

(NARRATIVE ON FOLLOWING PAGE)

NOTE: RADAR required.  
NOTE: Chart not to scale.