

ST. PAUL, MINNESOTA

AL-263 (FAA)

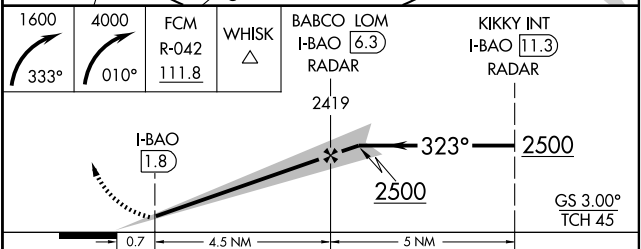
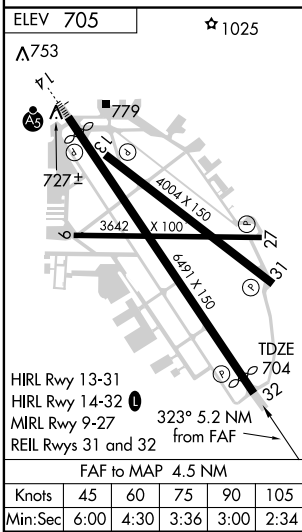
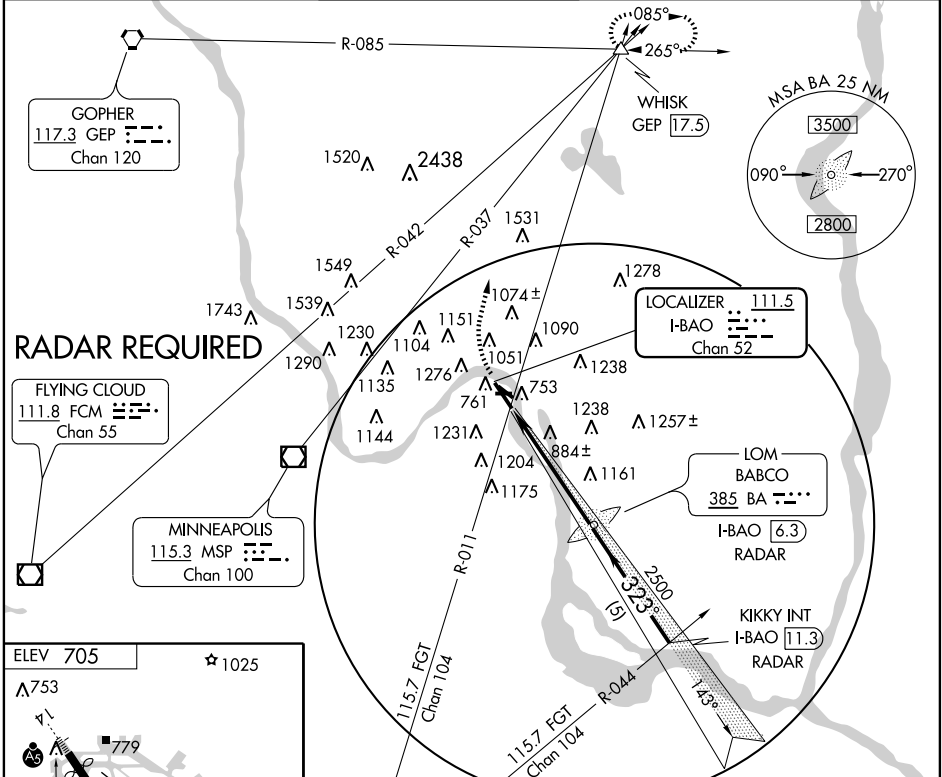
LOC/DME I-BAO 111.5 Chan 52	APP CRS 323°	Rwy Idg TDZE Apt Elev	6109 704 705
---	------------------------	-----------------------------	---

COPTER ILS or LOC RWY 32

ST. PAUL DOWNTOWN HOLMAN FIELD (STP)

A MISSED APPROACH: Climbing right turn heading 333° to 1600 then climbing right turn to 4000 via heading 010° and FCM R-042 to WHISK Int and hold.

ATIS 118.35	MINNEAPOLIS APP CON 121.2 357.4	ST. PAUL TOWER ★ 119.1 (CTAF) 257.8	GND CON 121.675	CLNC DEL 121.675	UNICOM 122.95
-----------------------	---	---	---------------------------	----------------------------	-------------------------



CATEGORY	COPTER	B	C	D
S-ILS 32	954-1/2 250 (300-1/2)		NA	
S-LOC 32	1360-1/2 656 (700-1/2)		NA	
CIRCLING		NA		

ST. PAUL, MINNESOTA
Orig-A 09015

44°56'N-93°04'W

COPTER ILS or LOC RWY 32

NC-1, 22 OCT 2009 to 19 NOV 2009

NC-1, 22 OCT 2009 to 19 NOV 2009