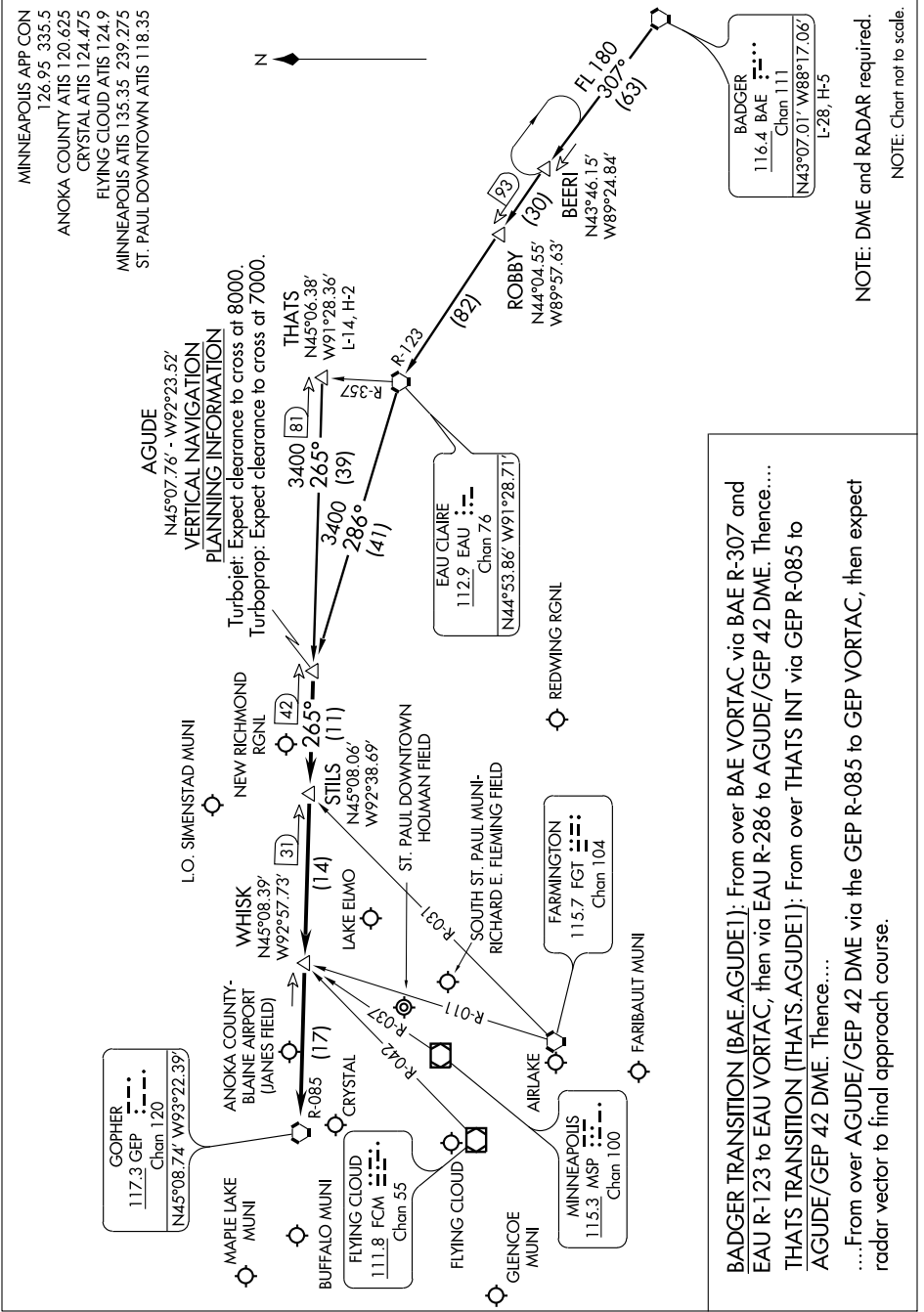


AGUDE ONE ARRIVAL

ST-263 (FAA)

MINNEAPOLIS-ST. PAUL, MINNESOTA

600Z NOV 61 to 600Z OCT 2009 to 1-1-C



AGUDE ONE ARRIVAL

MINNEAPOLIS-ST. PAUL, MINNESOTA

NC-1, 22 OCT 2009 to 19 NOV 2009

NOTE: DME and RADAR required.
NOTE: Chart not to scale.

BADGER TRANSITION (BAE.AGUDE1): From over BAE VORTAC via BAE R-307 and EAU R-123 to EAU VORTAC, then via EAU R-286 to AGUDE/GEF 42 DME. Thence....

THATS TRANSITION (THATS.AGUDE1): From over THATS INT via GEP R-085 to AGUDE/GEF 42 DME. Thence....

...From over AGUDE/GEF 42 DME via the GEP R-085 to GEP VORTAC, then expect radar vector to final approach course.

MINNEAPOLIS APP CON
126.95 335.5
ANOKA COUNTY ATIS 120.625
CRYSTAL ATIS 124.475
FLYING CLOUD ATIS 124.9
MINNEAPOLIS ATIS 135.35 239.275
ST. PAUL DOWNTOWN ATIS 118.35

AGUDE
N45°07.76' - W92°23.52'
VERTICAL NAVIGATION
PLANNING INFORMATION
Turbojet: Expect clearance to cross at 8000.
Turboprop: Expect clearance to cross at 7000.

BADGER
116.4 BAE
Chan 111
N43°07.01' - W88°17.06'
L-28, H-5

EAU CLAIRE
112.9 EAU
Chan 76
N44°53.86' - W91°28.71'

REDWING RGNL

FARIBAUT MUNI

FARMINGTON
115.7 FGT
Chan 104

SOUTH ST. PAUL MUNI-
RICHARD E. FLEMING FIELD

ST. PAUL DOWNTOWN
HOLMAN FIELD

STILTS
N45°08.06' -
W92°38.69'

NEW RICHMOND RGNL

WHISK
N45°08.39' -
W92°57.73'

L.O. SIMENSTAD MUNI

GOPIER
117.3 GEP
Chan 120
N45°08.74' - W93°22.39'

ANOKA COUNTY-
BLAINE AIRPORT
(JANES FIELD)

MAPLE LAKE MUNI

CRYSTAL

FLYING CLOUD
111.8 FCM
Chan 55

GLENCOE MUNI

AIRLAKE

MINNEAPOLIS
115.3 MSP
Chan 100