

RNAV (GPS) Z RWY 19R

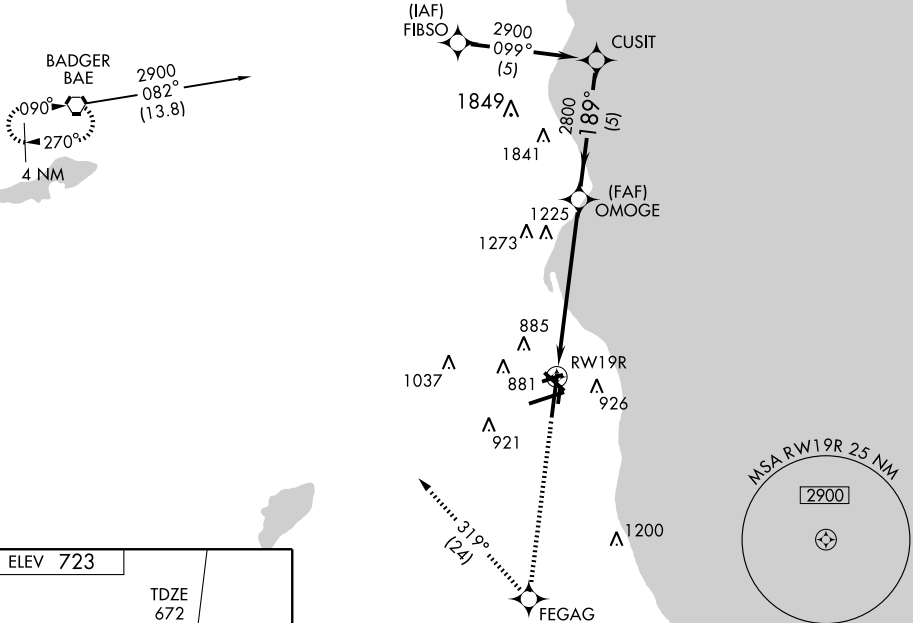
MILWAUKEE/GENERAL MITCHELL INTL (MKE)

APP CRS	Rwy ldg	8905
189°	TDZE	672
	Apt Elev	723

	Baro-VNAV NA below -16° C (4° F).		MISSED APPROACH: Climb to 2800 direct FEGAG WP then via 319° track to BAE VORTAC and hold.
	GPS or RNP-0.3 Required.		
	DME/DME RNP-0.3 NA.		

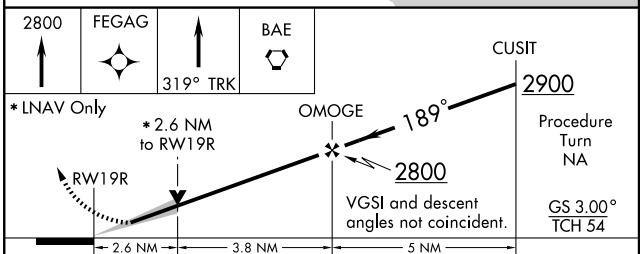
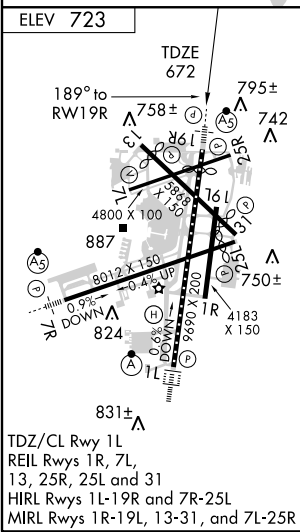
ATIS 126.4	MILWAUKEE APP CON 126.5 307.0	MILWAUKEE TOWER 119.1 325.8	GND CON 121.8 263.125	CLNC DEL 120.8
----------------------	---	---------------------------------------	---------------------------------	--------------------------

Procedure NA for arrival on BAE VORTAC airway radials 022 CW 142.



EC-3, 22 OCT 2009 to 19 NOV 2009

EC-3, 22 OCT 2009 to 19 NOV 2009



CATEGORY	A	B	C	D
GLS PA DA	NA			
RNAV/VNAV DA	1060/40 388 (400-¾)			
RNAV MDA	1560/40	888 (900-¾)	1560-2¼ 888 (900-2¼)	1560-2½ 888 (900-2½)
CIRCLING	1560-1¼	837 (900-1¼)	1560-2¾ 837 (900-2¾)	1560-3 837 (900-3)