

RNAV (GPS) Y RWY 19R

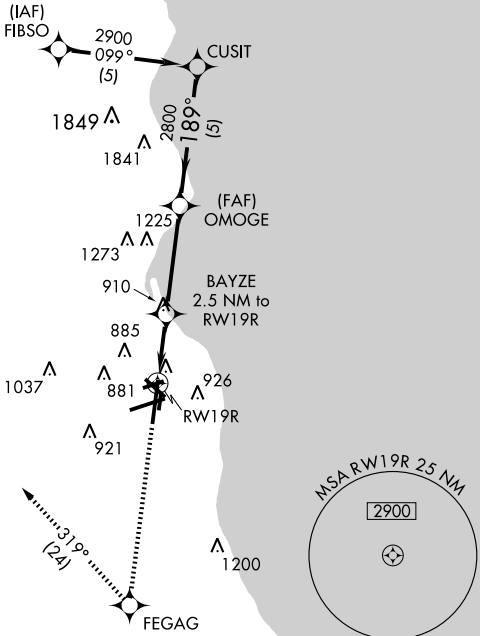
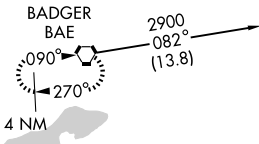
MILWAUKEE/GENERAL MITCHELL INTL (MKE)

APP CRS	Rwy ldg	8905
189°	TDZE	672
	Apt Elev	723

NA	GPS or RNP-0.3 Required. DME/DME RNP-0.3 NA.	MALSR	MISSED APPROACH: Climb to 2800 direct FEGAG WP then via 319° track to BAE VORTAC and hold.

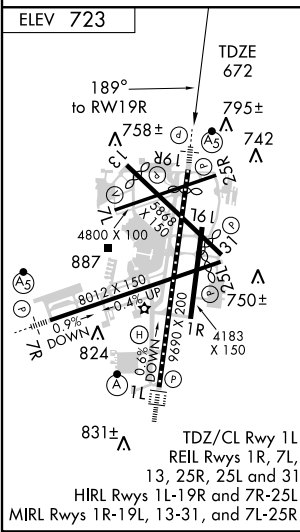
ATIS 126.4	MILWAUKEE APP CON 126.5 307.0	MILWAUKEE TOWER 119.1 325.8	GND CON 121.8 263.125	CLNC DEL 120.8
----------------------	---	---------------------------------------	---------------------------------	--------------------------

Procedure NA for arrival on BAE VORTAC airway radials 022 CW 142.



EC-3, 22 OCT 2009 to 19 NOV 2009

EC-3, 22 OCT 2009 to 19 NOV 2009



2800	FEGAG	BAE	CUSIT
↑	✧	↑	✧
		319° TRK	
RW19R		BAYZE 2.5 NM to RW19R	OMOGE
1.2 NM to RW19R		1540	2800
3.07° TCH 54		189°	
		VGS1 and descent angles not coincident.	
1.2		1.3 NM	3.9 NM
		5 NM	
CATEGORY	A	B	C
LNNAV MDA	1120-1/2	448 (400-1/2)	1120-3/4
			448 (400-1/4)
CIRCLING	1240-1	517 (600-1)	1240-1/2
			517 (600-1/2)
			1280-2
			557 (600-2)