

RNAV (GPS) RWY 1R

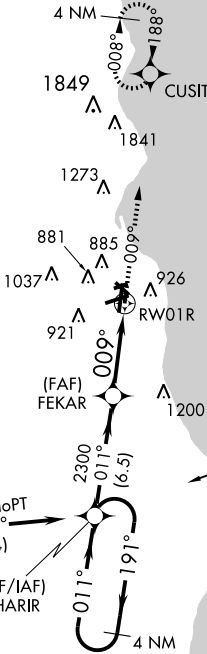
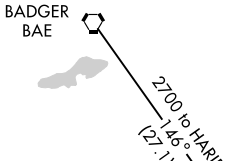
MILWAUKEE/GENERAL MITCHELL INTL (MKE)

APP CRS 009°	Rwy ldg 4183
	TDZE 677
	Apt Elev 723

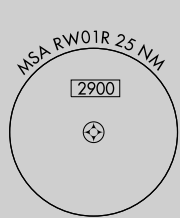
<p>⚠ NA</p> <p>GPS or RNP-0.3 Required. DME/DME RNP-0.3 NA.</p>	<p>MISSED APPROACH: Climb to 2900 direct CUSIT WP and hold.</p>
--	---

<p>ATIS 126.4</p>	<p>MILWAUKEE APP CON 126.5 307.0</p>	<p>MILWAUKEE TOWER 119.1 325.8</p>	<p>GND CON 121.8 263.125</p>	<p>CLNC DEL 120.8</p>
------------------------------	---	---	---	----------------------------------

Procedure NA for arrival on BAE VORTAC
airway radials 082 CW 202.



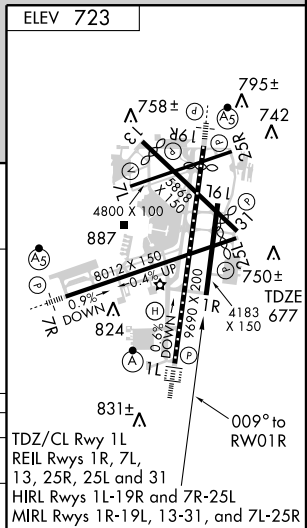
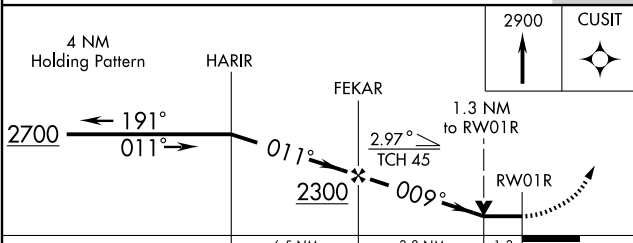
Procedure NA for arrival at PETTY on V216
Eastbound, V170 Southeast bound.



Procedure NA for arrival at WIPED
on V216 Westbound.

EC-3, 22 OCT 2009 to 19 NOV 2009

EC-3, 22 OCT 2009 to 19 NOV 2009



CATEGORY	A	B	C	D
LNVA MDA	1120-1 443 (400-1)	1120-1 1/4 443 (400-1 1/4)	1120-1 1/2 443 (400-1 1/2)	1120-2 443 (400-2)
CIRCLING	1240-1 517 (600-1)	1240-1 1/2 517 (600-1 1/2)	1240-1 1/2 517 (600-1 1/2)	1280-2 557 (600-2)

RNAV (GPS) RWY 1R