

# RNAV (GPS) RWY 19L

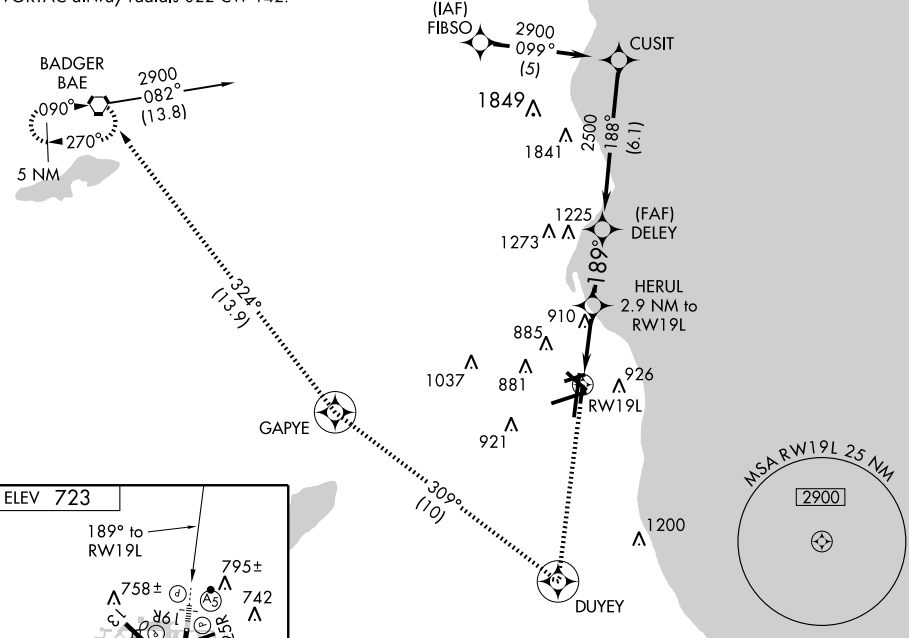
MILWAUKEE/GENERAL MITCHELL INTL (MKE)

APP CRS	Rwy ldg	<b>4183</b>
<b>189°</b>	TDZE	<b>674</b>
	Apt Elev	<b>723</b>

NA	GPS or RNP-0.3 Required.	MISSED APPROACH: Climb to 2800 direct DUYEY WP then right turn via 309° track to GAPYE WP then via 324° track to BAE VORTAC and hold.
	DME/DME RNP-0.3 NA.	

ATIS <b>126.4</b>	MILWAUKEE APP CON <b>126.5 307.0</b>	MILWAUKEE TOWER <b>119.1 325.8</b>	GND CON <b>121.8 263.125</b>	CLNC DEL <b>120.8</b>
----------------------	---	---------------------------------------	---------------------------------	--------------------------

Procedure NA for arrival on BAE VORTAC airway radials 022 CW 142.



EC-3, 22 OCT 2009 to 19 NOV 2009

EC-3, 22 OCT 2009 to 19 NOV 2009

ELEV 723

TDZ/CL Rwy 1L  
REIL Rws 1R, 7L, 13, 25R, 25L and 31  
HIRL Rws 1L-19R and 7R-25L  
MIRL Rws 1R-19L, 13-31, and 7L-25R

2800	DUYEY	GAPYE	BAE	CUSIT
↑				
	309° TRK		324° TRK	
	HERUL 2.9 NM to RWY19L	DELEY	2900	Procedure Turn NA
	1.3 NM to RWY19L	2500		
	1.3	1.6	2.7 NM	6.1 NM
CATEGORY	A	B	C	D
LNAV MDA	1120-1	446 (400-1)	1120-1¼ 446 (400-1¼)	1120-1½ 446 (400-1½)
CIRCLING	1240-1	517 (600-1)	1240-1½ 517 (600-1½)	1280-2 557 (600-2)