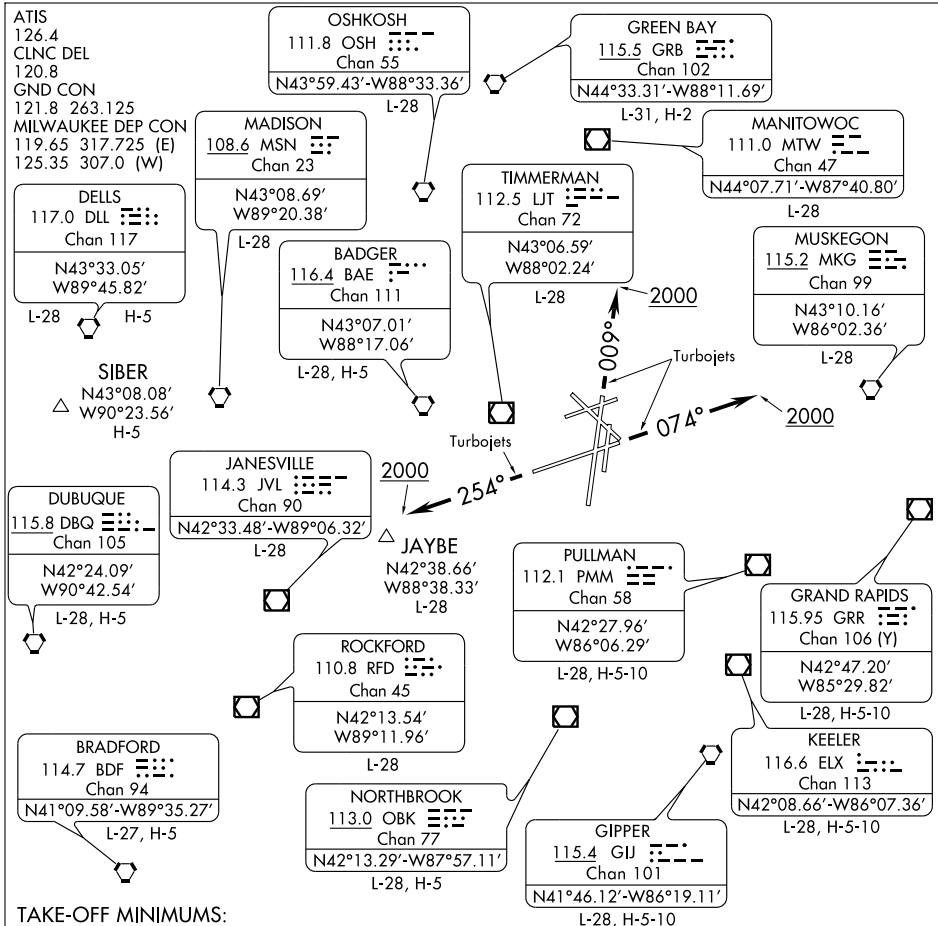


MITCHELL ONE DEPARTURE



EC-3, 22 OCT 2009 to 19 NOV 2009

EC-3, 22 OCT 2009 to 19 NOV 2009

TAKE-OFF MINIMUMS:

Rwy 1R, 1L, 7L, 13, 19R, 19L, 25R, 25L, STANDARD.

Rwy 7R, 300-1½ or STANDARD with a minimum climb of 300 feet per NM to 1100.

Rwy 31, 300-1½ or STANDARD with a minimum climb of 257 feet per NM to 1000.

SPECIAL INSTRUCTIONS: For all Turbjet aircraft:

TAKE-OFF Runway 1L: Climb heading 009° to 2000, then turn to assigned heading.

TAKE-OFF Runway 7R: Climb heading 074° to 2000, then turn to assigned heading.

TAKE-OFF Runway 19R: Turn to assigned heading.

TAKE-OFF Runway 25L: Climb heading 254° to 2000, then turn to assigned heading.

NOTE: RADAR Required.

NOTE: Chart not to scale.



DEPARTURE ROUTE DESCRIPTION

All aircraft expect radar vectors to join filed/assigned route. Maintain 5000' or assigned lower altitude. Expect clearance to requested altitude/flight level ten minutes after departure.

MITCHELL ONE DEPARTURE