

MILES CITY, MONTANA

AL-259 (FAA)

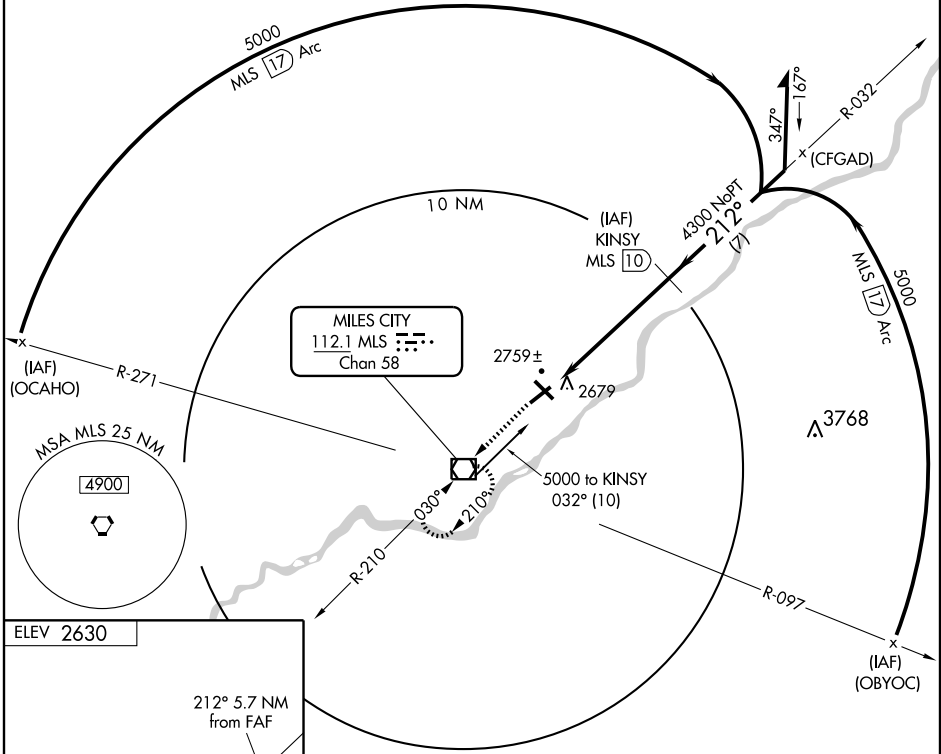
# VOR/DME or GPS RWY 22

MILES CITY/FRANK WILEY FIELD (MLS)

VORTAC MLS <b>112.1</b> Chan <b>58</b>	APP CRS <b>212°</b>	Rwy Idg TDZE Apt Elev	<b>5680</b> <b>2628</b> <b>2630</b>
--	------------------------	-----------------------------	---

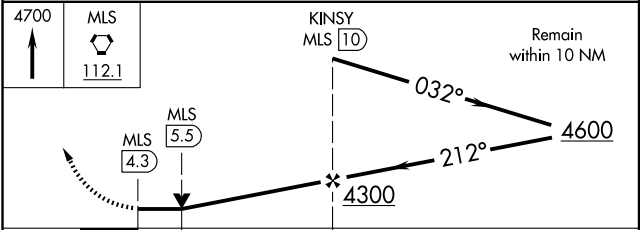
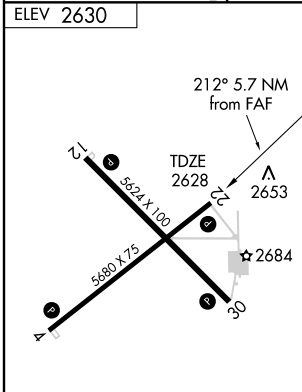
MISSED APPROACH: Climb direct to MLS VORTAC. Continue climb to 4700 in MLS VORTAC holding pattern.

ASOS <b>135.575</b>	GREAT FALLS RADIO <b>122.2 255.4</b>	UNICOM <b>123.0 (CTAF)</b>
------------------------	---	-------------------------------



NW-1, 22 OCT 2009 to 19 NOV 2009

NW-1, 22 OCT 2009 to 19 NOV 2009



CATEGORY	A	B	C	D
S-22	3020-1	392 (400-1)		3020-1½ 392 (400-1½)
CIRCLING	3060-1 430 (500-1)	3080-1 450 (500-1)	3100-1½ 470 (500-1½)	3180-2 550 (600-2)

REIL Rwy 4, 12, 22 and 30

MIRL Rwy 4-22 and 12-30

MILES CITY, MONTANA  
Amdt 8A 09239

46°26'N-105°53'W

# MILES CITY/FRANK WILEY FIELD (MLS)

## VOR/DME or GPS RWY 22