

MIDLAND, TEXAS

AL-258 (FAA)

RNAV (GPS) RWY 28

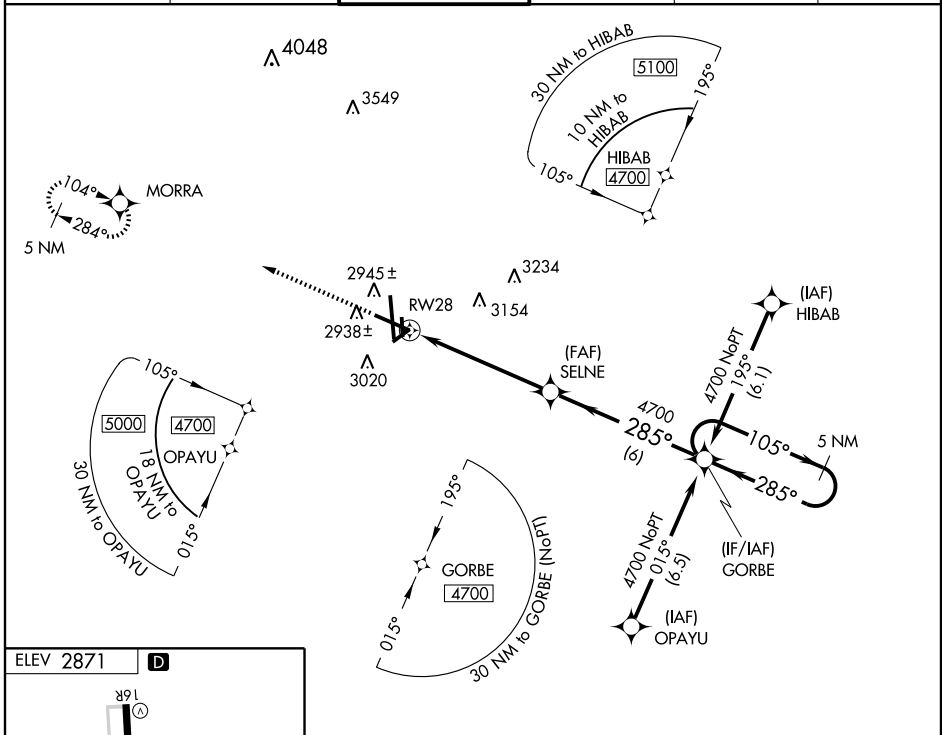
MIDLAND INTL (M.A.F.)

WAAS CH 81816 W28A	APP CRS 285°	Rwy Idg TDZE Apt Elev	7610 2857 2871
--	------------------------	-----------------------------	---

ASR Inoperative table does not apply to LPV and LNAV/VNAV all Cats and LNAV Cat C and D. DME/DME RNP-0.3 NA. Baro-VNAV NA below -20°C (-4°F). Circling NA at night to Rwy 16L.

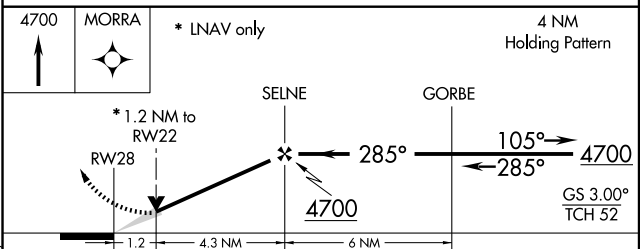
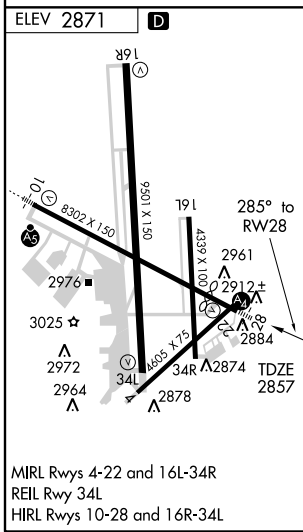
MALS MISSED APPROACH: Climb to 4700 direct MORRA and hold.

ATIS 126.8 235.975	MIDLAND APP CON* 124.6 290.4	MIDLAND TOWER* 118.7(CTAF) 0273.45	GND CON 121.9 348.6	CLNC DEL 118.05 317.65	UNICOM 122.95
------------------------------	--	--	-------------------------------	----------------------------------	-------------------------



SC-3, 22 OCT 2009 to 19 NOV 2009

SC-3, 22 OCT 2009 to 19 NOV 2009



CATEGORY	A	B	C	D
LPV DA		3110- ³ / ₄	253 (300- ³ / ₄)	
LNAV/VNAV DA		3280-1 ¹ / ₂	423 (500-1 ¹ / ₂)	
LNAV MDA	3280- ³ / ₄	423 (500- ³ / ₄)	3280-1 ¹ / ₄	423 (500-1 ¹ / ₄)
CIRCLING	3340-1 ¹ / ₂ 469 (500-1 ¹ / ₂)			3440-2 569 (600-2)

MIDLAND, TEXAS
Amdt 1 09127

31° 57' N-102° 12' W

RNAV (GPS) RWY 28